



Medical Cannabis Program Fact and Information Sheet 3-29-10
Program Start Date: 7/1/2007

Patients are individuals who have an eligible condition and have been accepted into the Medical Cannabis Program. Patients must renew their enrollment every year.

Full requirements are listed on the Patient Enrollment Form:

- Certifying Medical Provider referral
- Release of Medical Information
- Picture ID (proving residency in NM)
- Supporting Medical Documents as needed.

*note: some conditions have additional requirements such as a secondary referral (Severe Chronic Pain) or proof of diagnosis from a specialist (such as a psychiatrist for PTSD).

Personal Production License: Patients may apply for a personal production license in order to produce their own cannabis for personal use. They must submit an application **annually** which includes a security plan to help ensure their safety.

There is an annual licensing fee of \$15.00 if the patient household has an income of more than 400% of the poverty line (currently \$43,320 for a single individual). There is no fee if the patient household income is less than 400% of the poverty line.

Patients licensed for personal production: 480

Patients who have paid the licensing fee: 147 (30% of licensed patients)

Caregivers are individuals providing care for patients. A Caregiver can help up to 4 patients. Caregivers can not apply for their own personal production license, but can help Patients who have a license, so long as the plants are at the Patient's residence.

Caregivers may obtain medical cannabis for their Patients from Non-Profit Producers.

Requirements for a Caregiver are:

- Caregiver application form
- Completed background check
- Birth Certificate
- Permission from Patient for the applicant to be their Caregiver
- Acknowledgement from the Certifying Medical Provider that the applicant is able to help care for the patient
- Release of Information to both the Patient and the Certifying Medical Provider

Non-Profit Producer: This is a non-profit organization licensed for the production and distribution of medical cannabis. The requirements for non-profits are attached.

Process for non-profit producer proposals:

Proposals are reviewed by a workgroup. A minimum of 3 workgroup members read each proposal to ensure it is complete.

If a proposal is not complete, a letter is sent to the applicant organization outlining the missing information and/or requesting clarification as needed.

Applicants may submit revisions, which are subsequently reviewed by the workgroup.

When an application is complete, site visits are arranged.

If the location is appropriate within the guidelines, it is then brought to the Secretary of Health for a licensure determination.

The MCP has received 40 non-profit producer applications.

No proposal has been complete upon first review by the reviewing workgroup. After review, the non-profits are allowed to submit amendments to their proposal in order to satisfy the requirements.

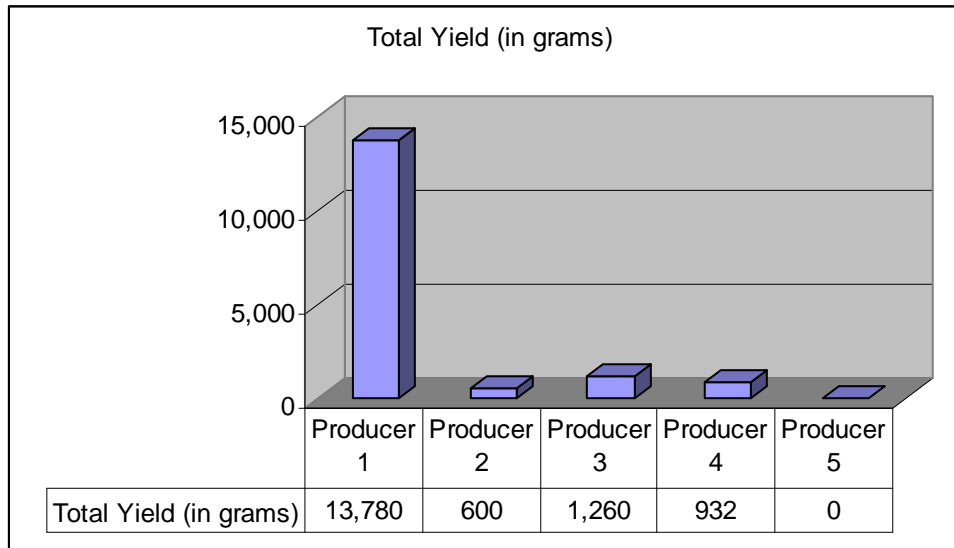
The Secretary of Health has licensed five (5) non-profit producers, the first one (1) in March 2009 and the other four (4) in November 2009.

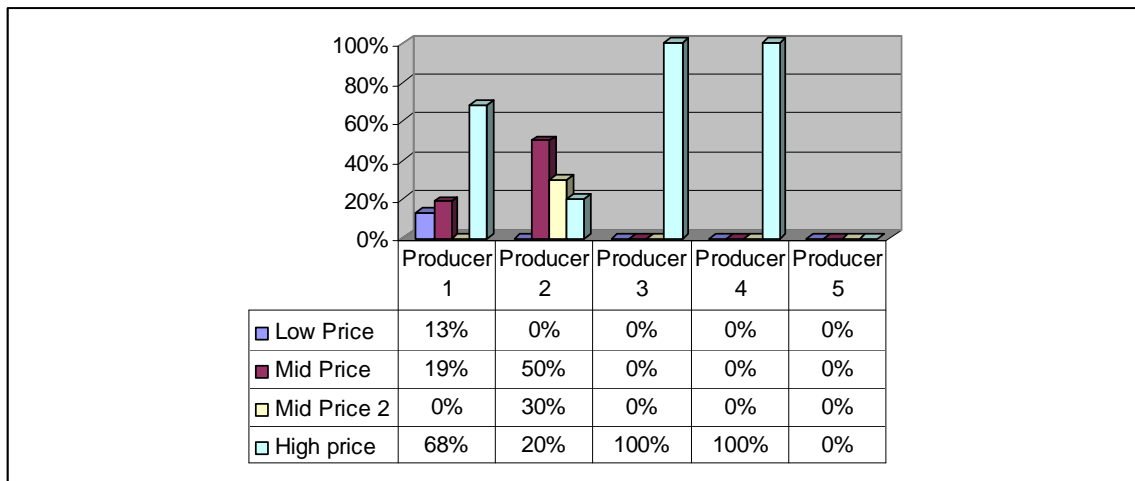
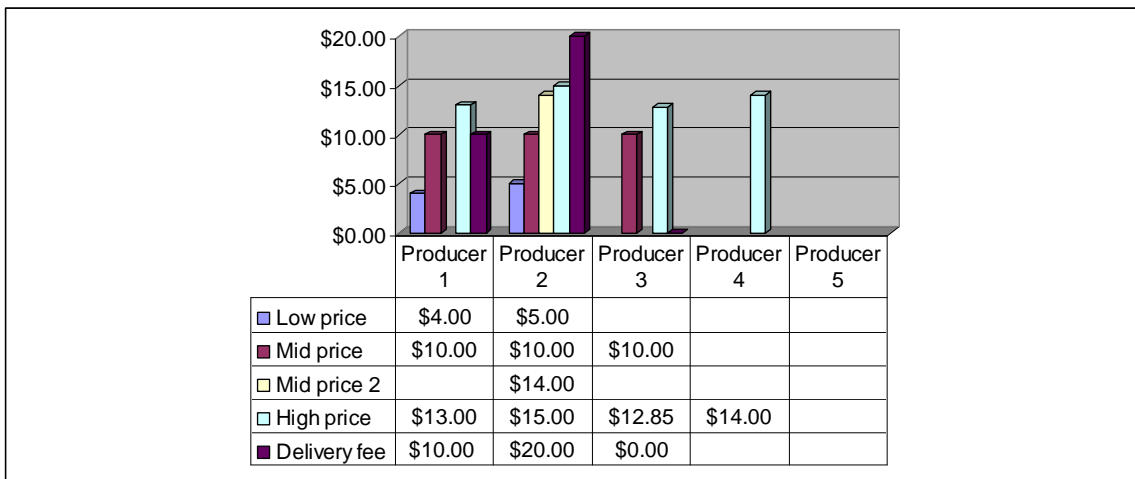
No proposals have been denied at this time.

Licensure of **completed** proposals is dependent upon patient need and balanced with ensuring the best services are provided to patients.

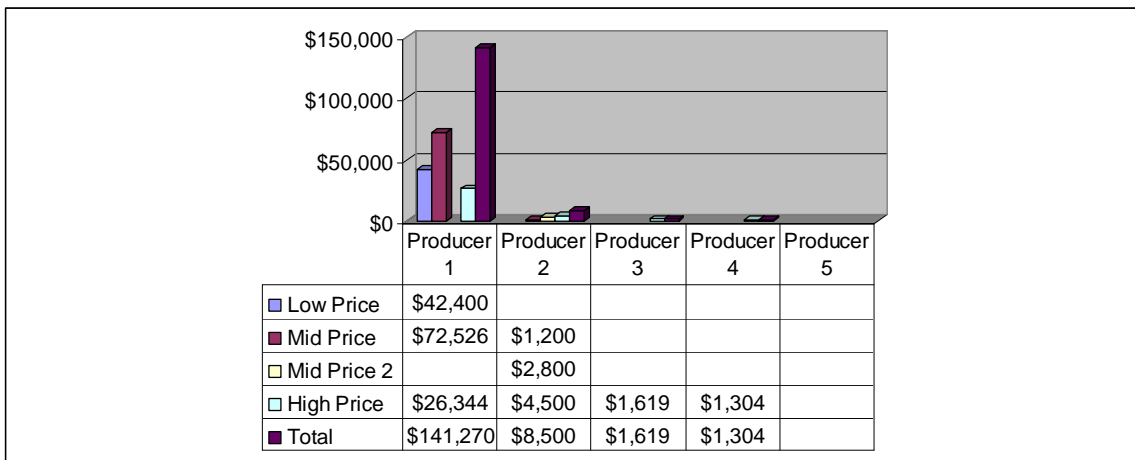
Since the program is still new, producers are not yet at full capacity.

In the following 4 charts, the licensed non-profit producers were randomly assigned a number designation. The data in these charts reflects information from the licensed non-profit producers as of January 2010.





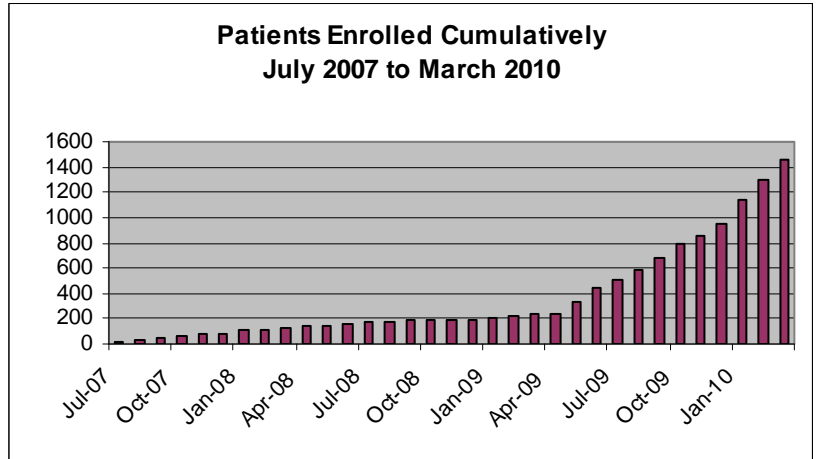
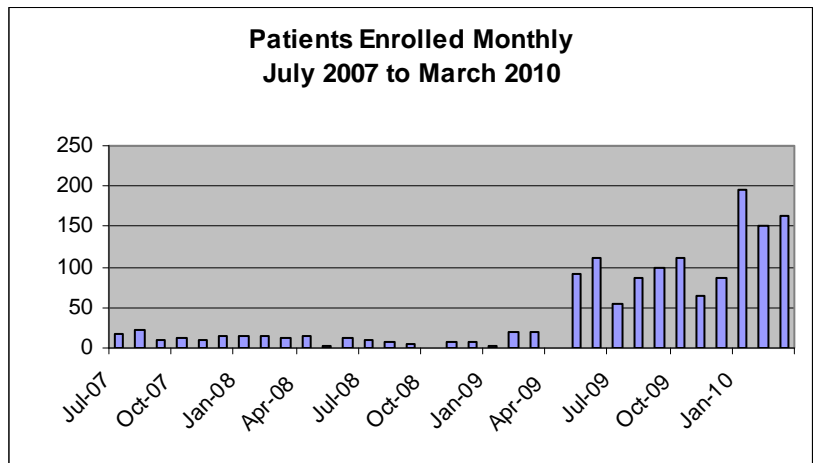
Please note that blank spaces or zero amounts are due to the limited production of most of the producers. Producer #5 has not yet begun harvest or distribution.



Please note these are only estimates based upon yield rates. Actual revenues will vary based upon factors such as delivery charges and final yield rates for product delivery.

Date (month-year)	Patients Enrolled Monthly	Patients Enrolled Cumulatively
July-07	17	17
August-07	22	39
September-07	11	50
October-07	13	63
November-07	10	73
December-07	14	87
January-08	16	103
February-08	15	118
March-08	13	131
April-08	14	145
May-08	3	148
June-08	13	161
July-08	11	172
August-08	7	179
September-08	4	183
October-08	1	184
November-08	7	191
December-08	7	198
January-09	3	201
February-09	21	222
March-09	20	242
April-09	1	243
May-09	91	334
June-09	111	445
July-09	55	500
August-09	86	586
September-09	100	686
October-09	111	797
November-09	65	862
December-09	86	948
January-10	196	1144
February-10	152	1296
March-10*	163	1459

*as of March 29, 2010



Patients Status	
Active	1381
Deceased	11
Inactive	67
Total	1459

Caregivers Status	
Active	38
Inactive	3
Total	41

Qualifying Condition	
PTSD	369
Cancer	219
Chronic Pain	154
Painful Peripheral Neuropathy	148
HIV/AIDS	143
Spinal Cord Damage with Intractable Spasticity	103
Multiple Sclerosis	100
Intractable Nausea/Vomiting	55
Epilepsy	50
Glaucoma	44
Crohn's Disease	27
Hep C Under Treatment	16
Severe Anorexia/Cachexia	14
Hospice Care	8
ALS	3
Cancer and Glaucoma	1
Epilepsy and HIV/AIDS	1
Epilepsy and Spinal Cord	1
Inclusion Body Myocytis	1
Inflammatory Autoimmune-mediated Arthritis	1
Multiple Sclerosis and Spinal Cord	1

Patients by County	
Bernalillo	482
Santa Fe	230
Sandoval	90
Doña Ana	85
Taos	69
Sierra	64
Rio Arriba	48
Valencia	46
Lincoln	41
Grant	40
San Juan	40
San Miguel	36
Otero	27
Eddy	21
Chavez	18
Socorro	15

McKinley	13
Los Alamos	12
Colfax	11
Cibola	10
Mora	10
Luna	10
Chaves	8
Torrance	7
Lea	6
Curry	6
Quay	5
Roosevelt	3
Torrence	2
Hidalgo	1
Harding	1
Union	1
Catron	1

Patients Licensed for Personal Production	
Yes	480
No	979
Fee Paid	147

By County	
Bernalillo	134
Santa Fe	82
Sandoval	32
Lincoln	25
Doña Ana	24
Taos	19
Rio Arriba	16
Sierra	16
Valencia	16
Otero	14
San Juan	14
Grant	13
San Miguel	12
Eddy	10
Socorro	10
Chavez	6
Mora	6
Colfax	5
Los Alamos	4
McKinley	4
Chaves	3
Cibola	3
Curry	3
Luna	2
Torrence	2
Catron	1
Harding	1
Lea	1
Quay	1
Torrance	1

NM-DOH Medical Cannabis Program reports are available on the program website:
http://www.nmhealth.org/idb/medical_cannabis.shtml

DVZ/dvz-3-29-10