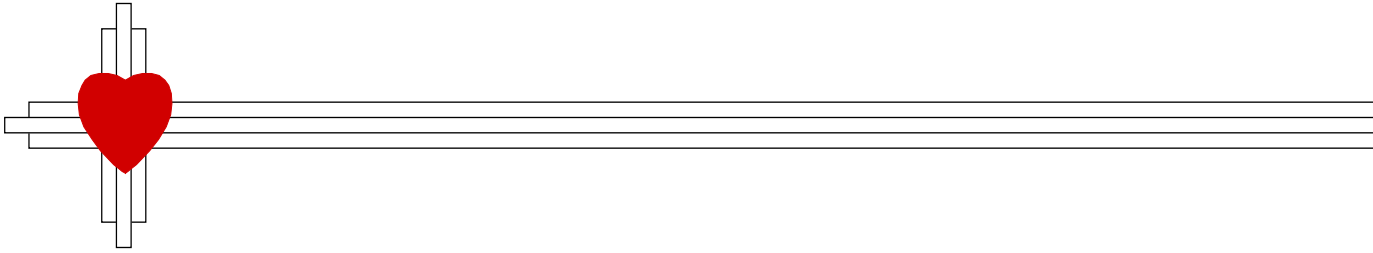


Partnership for a Healthy Torrance County

Estancia Valley Area Service Directory

March 2010



Alphabetic Index of Providers

March 2010 Service Directory

ALPHABETICAL INDEX

Provider/ Organization	Specialty	City	Phone	Page
7th Judicial District Court	Judicial	Estancia	384-2974	12
AA Alcoholics Anonymous	Support Groups	Estancia	266-1900	23
AA Assistance	Support Groups		266-1900	23
AA Came to Believe	Support Groups	Estancia	266-1900	23
AA Cedar Crest	Support Groups	Cedar Crest	266-1900	23
AA Edgewood Valley Group	Support Groups	Edgewood	266-1900	24
AA Estancia Valley Group	Support Groups	Moriarty	266-1900	24
AA McIntosh Group	Support Groups	McIntosh	266-1900	24
AA Mountainair Group	Support Groups	Mountainair	266-1900	24
AA New Beginnings	Support Groups	Estancia	266-1900	24
AA Old 66 Group	Support Groups	Edgewood	266-1900	24
AA Spanish Group	Support Groups	Estancia	266-3688 (Spanish)	24
AA Tijeras High Country Group	Support Groups	Tijeras	266-1900	24
AA Valley Girls (women only)	Support Groups	Estancia	266-1900	25
Above All Personal Care Services, LLC	Home Health	Moriarty	832-5553	11
Access2Care	Transportation - Medical		1-866-410-0002	28
Active Solutions	Physical Therapy	Edgewood	286-7838	16
Adult Probation and Parole	Law Enforcement	Moriarty	832-6832	13
Adult Protective Services	Abuse and Neglect		1-866-654-3219	1
Aging and Disability Resource Center	Aging and Disability	Santa Fe	1-800-432-2080	2
AI-Anon Fix On Route 66 AF Group	Support Groups	Edgewood	281-2013	25
AI-Anon High Country AF Group	Support Groups	Cedar Crest	262-2177	25
AI-Anon How It Works AF Group	Support Groups	Cedar Crest	281-5117	25
Alateen	Support Groups	Albuquerque	262-2177	25
All Faiths Receiving Home	Abuse and Neglect	Albuquerque	271-0329	1
Alta Mira Specialized Family Services	Child Development	Estancia	384-0894	6
Alta Mira Specialized Family Services	Disability Agencies	Estancia	384-0894	9
Amigas de La Familia	Abuse and Neglect	Moriarty	832-0332	1
Bethel Community Storehouse	Assistance	Moriarty	832-6642	2
Care Net East Mountain Pregnancy Center	Pregnancy & Parenting	Edgewood	281-5408	17

March 2010 Service Directory

ALPHABETICAL INDEX

CASA - Court Appointed Special Advocates	Abuse and Neglect	Moriarty	832-6328	1
Cedar Crest Vision	Vision	Cedar Crest	286-0300	29
Central NM Housing Corp.	Assistance - Housing	Albuquerque	345-4949	4
Child Support Enforcement	Income Support		1-800-288-7207	12
Children, Youth & Families Department	Child Care Providers		505-841-4813	5
Children, Youth and Families Department	Abuse and Neglect	Estancia	384-2745	1
Children, Youth and Families Department	Abuse and Neglect	Albuquerque	1-800-432-2075	1
Children, Youth and Families Department	Judicial	Estancia	384-2780	12
Cocaine Anonymous	Support Groups		291-3888	25
Conflict Management, Inc.	Counseling / Psychiatric Services	Albuquerque	884-9411	7
Cooperative Extension Services	Agriculture	Estancia	246-4745	2
CYFD Underage Drinking Initiative	Law Enforcement	Moriarty	832-4406	13
Depot Apartments	Assistance - Housing	Moriarty	832-6746	4
Disability Rights NM	Disability Agencies	Albuquerque	256-3100	10
Division of Vocational Rehabilitation	Disability Agencies	Moriarty	832-5038	10
Dr. David Stevens	Dental	Moriarty	832-5556	9
Drug Free TRES Program	Teens & Youth	Moriarty	832-4471	26
DWI Memorial of Perpetual Tears	Substance Abuse Prevention Programs	Moriarty	832-4495	23
Eagles Wings Youth Ranch	Teens & Youth	Mountainair	847-0062	27
Earthchild	Child Development	Edgewood	281-2878	6
East Mountain Eye Clinic	Vision	Edgewood	286-2020	29
East Mountain Family Health	Primary Care	Edgewood	286-3100	17
East Mountain High School	Schools	Sandia Park	281-7400	19
East Mountain Library	Libraries	Tijeras	281-8508	14
East Mountain Orthodontics	Dental	Edgewood	286-1193	9
East Mountain Pantry	Assistance - Food	Tijeras	281-3342	4
East Mountain Physical Therapy	Physical Therapy	Moriarty	832-4011	16
East Mountain Physical Therapy	Physical Therapy	Edgewood	281-8463	16
East Mountain Physical Therapy	Physical Therapy	Cedar Crest	286-3678	16
Echo CSFP Program	Assistance - Food	Estancia	242-6777	4
Edgewood Christian School	Schools	Edgewood	281-5091	19

March 2010 Service Directory

ALPHABETICAL INDEX

Edgewood Community Library	Libraries	Edgewood	281-0138	15
Edgewood Elementary School	Schools	Edgewood	832-5740	19
Edgewood Family Dentistry	Dental	Edgewood	281-0373	9
Edgewood Middle School	Schools	Edgewood	832-5880	19
Edgewood Pediatric Clinic	Primary Care	Edgewood	281-4620	17
Edgewood Police Dept	Law Enforcement	Edgewood	281-1060	13
Edgewood Senior Center	Senior Services	Edgewood	281-2515	22
Enchantment Legacy, Inc.	Aging and Disability	Estancia	384-3032/ 2745	2
Estancia High School	Schools	Estancia	384-2002	20
Estancia Lower Elementary School	Schools	Estancia	384-2005	20
Estancia Magistrate Court	Judicial	Estancia	384-2926	12
Estancia Middle School	Schools	Estancia	384-2003	20
Estancia Municipal Court	Judicial	Estancia	384-0512	12
Estancia Municipal School District	Schools	Estancia	384-2000	20
Estancia Police Department	Law Enforcement	Estancia	384-4282	13
Estancia Public Library	Libraries	Estancia	384-9655	14
Estancia Senior Center	Senior Services	Estancia	384-5010	22
Estancia Teens Need Teens (TNT)	Teens & Youth	Estancia	384-2003	27
Estancia Upper Elementary School	Schools	Estancia	384-2004	20
Estancia Valley Learning Center	Schools	Estancia	384-2002	20
EVRAS - Estancia Valley Regional Animal Shelter	Assistance	Moriarty	832-9597	2
First Choice Community Healthcare	Dental	Edgewood	281-3406	9
First Choice Community Healthcare	Primary Care	Edgewood	281-3406	17
Forest Guild YCC Summer Youth Employment	Work Programs	Mountainair	847-2990	29
Forest Guild YCC Summer Youth Employment	Work Programs	Mountainair	847-2211	29
Gamblers Anonymous	Support Groups		260-7272	25
H1N1 Hot Line	Public Health		1-877-304-4161	19
Head Start - Admin Office & Estancia Center	Child Development	Estancia	384-2302	6
Head Start - Moriarty Center	Child Development	Moriarty	832-2588	6
Head Start - Mountainair Center	Child Development	Mountainair	847-0547	6
HELP - NM	Assistance - Financial	Moriarty	832-5648	3

March 2010 Service Directory

ALPHABETICAL INDEX

Hogares Inc.	Counseling / Psychiatric Services	Moriarty	832-9322	7
Hope Now	Assistance - Financial		1-888-995-4673	3
Housing and Urban Development (HUD)	Assistance - Housing	Mountainair	847-2416	4
Independent Living Resource Center (ILRC)	Disability Agencies	Moriarty	832-1128	10
Indigent Fund	Assistance - Medical	Estancia	246-4756	5
Integrated Transportation Management (ITM)	Transportation - Medical	Mesa	1-888-593-2052	28
Jelly Bean Junction	Child Care Providers	Moriarty	832-6458	5
Julian F. Rowe, MD, MPH, FACOG	Obstetrics/ Gynecology	Edgewood	286-1900	15
Liberty Ranch School	Schools	Estancia	384-2530	20
Life Directions Counseling	Counseling / Psychiatric Services	Moriarty	934-0603	7
LIHEAP	Assistance - Utilities	Moriarty	832-5026	5
Loaves and Fishes	Assistance - Food	Edgewood	832-6781	4
Logisticare	Transportation - Medical	Phoenix	1-866-418-9812	28
Loving Arms Day Care	Child Care Providers	Edgewood	281-8992	6
May's Pharmacy	Pharmacy	Moriarty	832-9988	15
McIntosh Senior Center	Senior Services	McIntosh	384-3064	22
McKee Counseling Services	Counseling/ Psychiatric Services	Moriarty	505-407-6489	9
McLeod Medical Center	Primary Care	Moriarty	832-4434	18
McLeod Medical Center	Primary Care	Edgewood	286-2396	18
McLeod Medical Center	Primary Care	Cedar Crest	505-281-2460	18
Morgan Oriental Medicine	Acupuncture	Edgewood	281-9555	1
Moriarty Church of the Nazarene	Assistance - Food	Moriarty	832-4390	4
Moriarty Community Library	Libraries	Moriarty	832-2513	14
Moriarty Elementary School	Schools	Moriarty	832-4927	20
Moriarty High School	Schools	Moriarty	832-4254	21
Moriarty Magistrate Court	Judicial	Moriarty	832-4476	12
Moriarty Middle School	Schools	Moriarty	832-6200	21
Moriarty Municipal Court	Judicial	Moriarty	832-6354	13
Moriarty Police Department	Law Enforcement	Moriarty	832-6060	13
Moriarty Senior Center	Senior Services	Moriarty	832-4425	22
Moriarty-Edgewood Municipal School District	Schools	Moriarty	832-4471	21

March 2010 Service Directory

ALPHABETICAL INDEX

Mountain Chiropractic & Kinesiology	Chiropractic	Tijeras	281-9090	7
Mountain Community Counseling	Counseling / Psychiatric Services	Cedar Crest	281-9542	7
Mountainair Christian Alliance	Assistance	Mountainair	847-2773	2
Mountainair Elementary School	Schools	Mountainair	847-2231	21
Mountainair High School	Schools	Mountainair	847-2211	21
Mountainair Library	Libraries	Mountainair	847-9676	14
Mountainair Meds and More	Pharmacy	Mountainair	847-0242	16
Mountainair Police Department	Law Enforcement	Mountainair	847-2806	13
Mountainair School District	Schools	Mountainair	847-2333	21
Mountainair Senior Center	Senior Services	Mountainair	847-2885	23
Mountainview Elementary School	Schools	Moriarty	832-6827	21
Mustang Health Center	Counseling / Psychiatric Services	Mountainair	847-2211 x1019	8
Mustang Health Center	Primary Care	Mountainair	847-2211 x1019	18
My Happy Place Children's Center	Child Development	Edgewood	286-4077	6
Narcotics Anonymous	Support Groups		260-9889	25
Narcotics Anonymous Last Rights Group	Support Groups	Moriarty	260-9889	26
New Beginnings	Disability Agencies	Estancia	384-1045	10
New Beginnings Christian Academy	Schools	Mountainair	847-2773	21
New Mexico Kids	Child Development	Albuquerque	1-800-691-9067	7
New Mexico State Police	Assistance	Moriarty	281-0096	3
NM Aging and Long Term Services	Aging and Disability	Albuquerque	222-4500	2
NM Department of Human Services	Income Support & Medicaid Assistance	Moriarty	832-5026	12
NM Educational Opportunity Center	Education - Advisement	Moriarty	832-6774	11
NM Vital Records & Health Statistics	Public Health	Albuquerque	841-4183	19
Nurse Advice Line	Primary Care		1-877-725-2552	18
Open Hands	Assistance	Santa Fe	505-428-2320	3
Overeaters Anonymous	Support Groups	Rio Rancho	891-2664	26
Partnership for a Healthy Torrance County	Support Programs	Moriarty	832-0332	26
Plants of Thanksgiving	Education - Vocational	Edgewood	350-0595	11
PMS Esperanza Medical Center	Counseling / Psychiatric Services	Estancia	384-2777	8
PMS Esperanza Medical Center	Dental	Estancia	384-2777	9

March 2010 Service Directory

ALPHABETICAL INDEX

PMS Esperanza Medical Center	Primary Care	Estancia	384-2777	18
PMS Mountainair Family Health Center	Counseling / Psychiatric Services	Mountainair	847-2271	8
PMS Mountainair Family Health Center	Primary Care	Mountainair	847-2271	18
Prince of Peace Lutheran School	Schools	Cedar Crest	281-6833	22
Read "Write" Adult Literacy Program	Literacy Programs	Moriarty	832-9469	14
Resource Center	Assistance - Medical	Santa Fe	1-800-432-2080	5
Route 66 Elementary School	Schools	Edgewood	832-5760	22
Safe Ride	Transportation - Medical	Albuquerque	1-800-797-7433	28
Sanctuary Zone	Domestic Violence	Estancia	384-0381	10
Santa Fe County 4-H Clubs	Teens & Youth	Santa Fe	1-505-471-4711	27
Schools to Career / Work Program	Teens & Youth	Estancia	384-2002	27
Seibert Chiropractic	Chiropractic	Cedar Crest	286-2861	7
Skyline Therapy Services	Physical Therapy	Edgewood	281-1811	16
Smart Choice Ride	Transportation - Public		505-705-0332	29
Smith's Pharmacy	Pharmacy	Edgewood	286-9040	16
Social Security Administration	Assistance		1-800-772-1213	3
South Mountain Elementary School	Schools	Edgewood	832-5700	22
St. Vincent de Paul Society	Assistance	Moriarty	832-6655	3
St. Vincent de Paul Society	Assistance	Tijeras	281-2297	3
St. Vincent de Paul Society	Assistance	Mountainair	847-0167	3
Step-Up Child Care	Child Care Providers	Edgewood	286-4749	6
Su Vida Services	Disability Agencies	Albuquerque	299-2494	10
Substance Abuse Prevention Task Force	Substance Abuse Prevention Programs	Moriarty	832-0332	23
SunRise Counseling Services	Counseling / Psychiatric Services	Edgewood	505-891-1001	8
Superior Medical Transportation	Transportation - Medical	Albuquerque	1-877-735-0111	28
Talking Talons Youth Leadership Program	Teens & Youth	Tijeras	604-0098	27
TCPO TO GO Transportation	Transportation - Medical	Moriarty	832-0332	28
TCPO TO GO Transportation	Transportation - Public	Moriarty	832-0332	29
Teen Outreach Program (TOP)	Teens & Youth	Estancia	384-1092	27
The Loft Teen Ministry	Teens & Youth	Moriarty	832-6385	27
Torrance County 4-H Clubs	Teens & Youth	Estancia	246-4745	27

March 2010 Service Directory

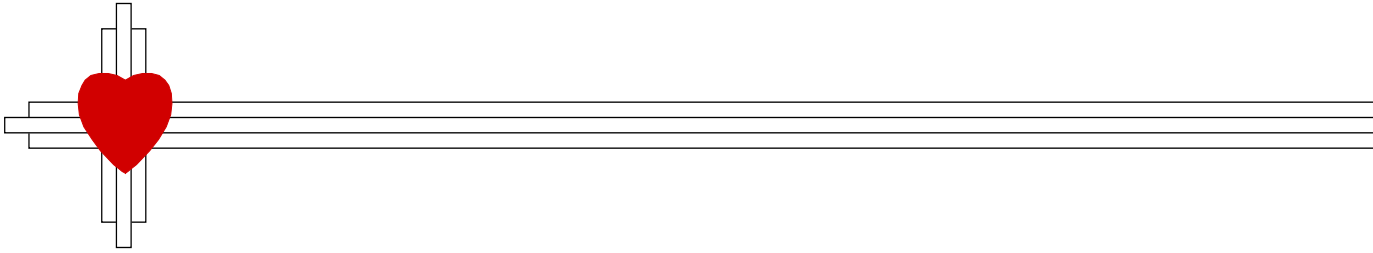
ALPHABETICAL INDEX

Torrance County Counseling	Counseling / Psychiatric Services	Moriarty	832-9135	8
Torrance County Detention Facility	Law Enforcement	Estancia	384-2711	14
Torrance County Dispatch	Emergency Services	McIntosh	384-9631	11
Torrance County District Attorney	Judicial	Estancia	384-2800	13
Torrance County Domestic Violence Program	Domestic Violence	Moriarty	832-6567	10
Torrance County DWI Program	Substance Abuse Prevention Programs	Estancia	246-4774	23
Torrance County Emergency Manager	Emergency Services	Estancia	246-4748	11
Torrance County Project Office	Medicaid Assistance	Moriarty	832-0332	15
Torrance County Project Office	Pregnancy & Parenting	Moriarty	832-0332	17
Torrance County Project Office	Support Programs	Moriarty	832-0332	26
Torrance County Project Office Outreach	Medicaid Assistance	Mountainair	832-0332	15
Torrance County Public Health - Estancia	Pregnancy	Estancia	384-2351	17
Torrance County Public Health - Estancia	Public Health	Estancia	384-2351	19
Torrance County Public Health - Moriarty	Pregnancy	Moriarty	832-6782	17
Torrance County Public Health - Moriarty	Public Health	Moriarty	832-6782	19
Torrance County Sheriff	Law Enforcement	Estancia	246-4773	14
Torrance County Teen Court	Teens & Youth	Moriarty	832-4424	28
Torrance Works Career Center	Work Programs	Moriarty	832-5640	30
Trish Daino, Private Therapist	Counseling / Psychiatric Services		803-7110	8
Trish Daino, Private Therapist	Domestic Violence		803-7110	10
University of New Mexico	Education - Advisement	Moriarty	832-6774	11
UNM Carino Early Childhood TTAP	Child Development	Albuquerque	277-3155	7
UNM Hospital Financial Services	Assistance - Medical	Albuquerque	272-2521	5
Valencia Counseling Services	Counseling / Psychiatric Services	Estancia	384-0220	8
Van Stone Elementary School	Schools	Estancia	384-2005	22
Vital Records & Health Statistics	Support Programs	Santa Fe	505-827-0121	26
Walgreens Pharmacy	Pharmacy	Edgewood	281-0178	16
Wal-Mart Eye Center	Vision	Edgewood	286-3043	29
Wal-Mart Pharmacy	Pharmacy	Edgewood	286-3043	16
Weight Watchers	Support Groups	Moriarty	1-800-651-6000	26
Weight Watchers	Support Groups	Estancia	1-800-651-6000	26

March 2010 Service Directory

ALPHABETICAL INDEX

WIC - Torrance County Public Health - Estancia	Nutrition	Estancia	384-2351	15
WIC - Torrance County Public Health - Moriarty	Nutrition	Moriarty	832-6782	15
WIC - Torrance County Public Health - Mountainair	Nutrition	Mountainair	384-2351	15
Workforce Connection of Central New Mexico	Work Programs	Moriarty	832-6774	30
YCC Summer Youth Employment	Work Programs	Edgewood	281-7655	30
Youth Health Advisory	Teens & Youth	Estancia	384-2002	28
YWCA Carino	Counseling / Psychiatric Services	Albuquerque	254-9922	8



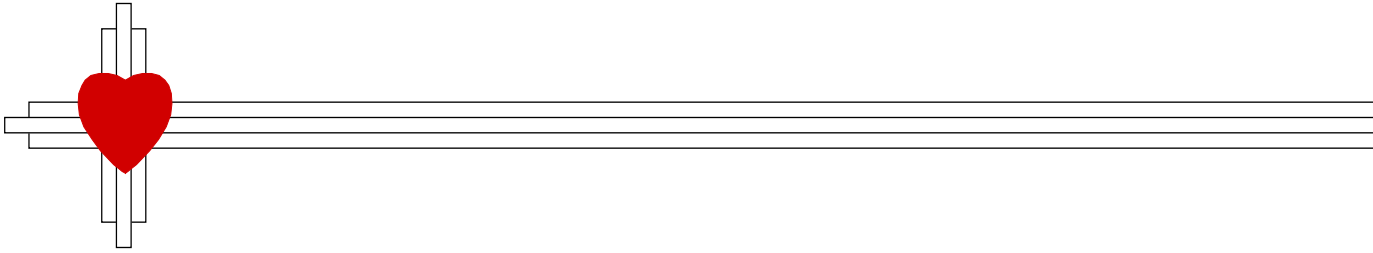
Index by Service Category

March 2010 Service Directory

SERVICES INDEX

Service Category	Page
Abuse and Neglect	1
Acupuncture	1
Aging and Disability	2
Agriculture	2
Assistance	2
Assistance - Financial	3
Assistance - Food	4
Assistance - Housing	4
Assistance - Medical	5
Assistance - Utilities	5
Child Abuse -- SEE Abuse and Neglect	1
Child Care Providers	5
Child Development	6
Chiropractic	7
Counseling/ Psychiatric Services	7
Dental	9
Disability Agencies	9
Domestic Violence	10
Education - Advisement	11
Education - Vocational	11
Emergency Services	11
Home Health	11
Income Support	12
Income Support & Medicaid Assistance	12

Service Category	Page
Judicial	12
Law Enforcement	13
Libraries	14
Literacy Programs	14
Medicaid Assistance	15
Nutrition	15
Obstetrics/ Gynecology	15
Pharmacy	15
Physical Therapy	16
Pregnancy	17
Pregnancy & Parenting	17
Primary Care	17
Psychiatric -- SEE Counseling	7
Public Health	19
Schools	19
Senior Services	22
Substance Abuse Prevention Programs	23
Support Groups	23
Support Programs	26
Teens & Youth	26
Transportation - Medical	28
Transportation - Public	29
Vision	29
Work Programs	29



Provider Directory

Provider	Physical Address			Phone	Services	Days	Hours	Fee/Billing	
Abuse and Neglect									
Adult Protective Services									
Aging & Long-Term Services				1-866-654-3219 505-476-4912	Adult Abuse	Call for Info.		Medicaid Fee Sliding Fee No Charge	
All Faiths Receiving Home									
	1709 Moon St. NE Albuquerque	NM	87112	271-0329	Serve kids who have been abused & their families; provide counseling & assist with other needs. Evening/ weekend appointments available.	Mon - Thur Fri, Sat	8:00 - 7:00 8:00 - 5:00	Medicaid Fee Sliding Fee No Charge	X X X
Amigas de La Familia									
Torrance County Project Office	809 S 1st St., Suite A Moriarty	NM	87035	832-0332	Child abuse and neglect prevention, Prenatal Classes, Home visiting, Postnatal Exercise Classes, Community Education, Bilingual outreach at Mustang Health Center & Bethel Community Storehouse	Mon - Thurs Extended Hrs. 2nd Tu Extended Hrs. 3rd Sat	7:30 - 5:30 7:30 - 7:00 8:00 - 12:00	Medicaid Fee Sliding Fee No Charge	 X
CASA - Court Appointed Special Advocates									
Rio Grande Valley CASA	1211 Old Rt. 66 Moriarty	NM	87035	832-6328 1-866-338-4031	Volunteer advocacy for abused and neglected children involved in the court system.	By Appointment office - Mon-Thur	By Appointment 9:00-2:00	Medicaid Fee Sliding Fee No Charge	 X
Children, Youth and Families Department									
Foster-A-Future	300 San Mateo NE Albuquerque	NM	87108	1-800-432-2075 505-841-2910	State Intake - Foster Parent Program	Mon - Fri	8:00 - 5:00	Medicaid Fee Sliding Fee No Charge	 X
Protective Services	214 S. 5th St. Estancia	NM	87016	384-2745 Hotline - 841-6100	Protective Services	Mon - Fri 24 hr. on-call	8:00 - 5:00	Medicaid Fee Sliding Fee No Charge	 X
Acupuncture									
Morgan Oriental Medicine									
	2 Marietta Ct Ste C Edgewood	NM	87015	281-9555	Acupuncture, Chinese Herbal Medicine -- Nationally Certified. Senior Discounts, all major credit cards accepted.	Tue - Wed Thur - Fri	8:30 - 2:30 8:00 - 6:00	Medicaid Fee Sliding Fee No Charge	 X

Provider	Physical Address			Phone	Services	Days	Hours	Fee/Billing	
Aging and Disability									
Aging and Disability Resource Center									
	2550 Cerrillos Rd Santa Fe	NM	87505	1-800-432-2080	Adult Protective Services, Benefits counseling, D&E and MI VIA Waiver Registration, Prescription Drug Assistance, Community Services, Housing/Facility inquiries, Caregiver Support.	Call for Info.		Medicaid Fee Sliding Fee No Charge	
Enchantment Legacy, Inc.									
Adult Protective Services	514 W. Williams Ave Estancia	NM	87016	384-3032/ 2745 1-866-654-3219	Personal Care, Home Mgmt, Transportation to medical appts. Income eligibility assessment required. Homecare for Elderly & Disabled Adults.	Mon - Fri	8:00- 5:00 unless in field	Medicaid Fee Sliding Fee No Charge	X X
NM Aging and Long Term Services									
NM Dept. of Human Services	1015 Tijeras Ave NW, Ste 200 Albuquerque	NM	87102	222-4500 222-4504	Referral for all issues of aging and for young families on assistance. Senior Olympics, HIV Advocate, Medicaid/ Medicare, and Indians Aging program. Call 1-800-432-2080 for Medicaid questions.	Mon - Fri	8:00 - 5:00	Medicaid Fee Sliding Fee No Charge	 X
Agriculture									
Cooperative Extension Services									
	205 9th and Allen Estancia	NM	87016	246-4745	Education Programs & Development	Mon - Thur	7:30 -5:30	Medicaid Fee Sliding Fee No Charge	 X
Assistance									
Bethel Community Storehouse									
	1719 4th St South Moriarty	NM	87035	832-6642	Emergency Assistance, Food, Clothes, Free nutrition classes. Call for Information.	Tues - Fri Sat Tues - Fri - Pantry	10:00 - 5:00 10:00 - 4:00 12:00 - 3:45	Medicaid Fee Sliding Fee No Charge	 X X
EVRAS - Estancia Valley Regional Animal Shelter									
Torrance County Animal Services	84 Galloway Road Moriarty	NM	87035	832-9597 705-0024	Shelters animals and handles adoptions for Torrance County & Moriarty	Mon - Thur Fri - Sat	8:00 - 5:30 9:00 - 1.00	Medicaid Fee Sliding Fee No Charge	 X
Mountainair Christian Alliance									
Mountainair Christian Center	205 W Broadway Mountainair	NM	87036	847-2773	Gas assistance for transients. Assistance with utilities, food and gas for local residents.	Mon - Thurs	7:30 - 3:45	Medicaid Fee Sliding Fee No Charge	 X

Provider	Physical Address	Phone	Services	Days	Hours	Fee/Billing
Open Hands						
	2976 Rodeo Park Dr. East Santa Fe NM 87505	505-428-2320 1-800-396-4528	Adult Daycare, and Medical Equipment; Grab bars for 60 yrs and older installed Free. No financial assistance.	Mon - Fri Telephone	8:00 - 5:00 Intake	Medicaid Fee Sliding Fee No Charge X
Social Security Administration						
		1-800-772-1213	Obtain original Social Security card			Medicaid Fee Sliding Fee No Charge
St. Vincent de Paul Society						
Estancia Valley Catholic Parish	1400 3rd St. South Moriarty NM 87016	832-6655 384-4028 (Barbara)	Food Pantry and Commodity Distribution in Estancia Rectory; utility assistance (w/ disconnect notice); wood assistance	3rd Fri Wed	9:00 - 12:00 10:00 - 12:30	Medicaid Fee Sliding Fee No Charge X
Holy Child Catholic Parish	19 Camino del Santo Nino Tijeras NM 87059	281-2297	Utilities and special food; Home Visits	Call for info		Medicaid Fee Sliding Fee No Charge X
St. Alice Catholic Parish	215 W Broadway Mountainair NM 87036	847-0167	Assistance with utility bills and food; Can goods.	Mon - Wed Fri	8:30 - 3:00 10:00 - 4:00	Medicaid Fee Sliding Fee No Charge X
Assistance - Financial						
HELP - NM						
HSD Income Support Division	109 Tulane St. Moriarty NM 87035	832-5648	Financial assistance: past due utilities, past due rent, prescription assistance	Mon - Fri By appointment	8:00 - 5:00	Medicaid Fee Sliding Fee No Charge X
Hope Now						
		1-888-995-4673	Support and Guidance for Homeowners- mortgage renegotiation, foreclosure, credit counseling	Call for Information		Medicaid Fee Sliding Fee No Charge
Assistance - Food						
East Mountain Pantry						
	Corner of Route 66 & S NM Hwy 14 Tijeras NM 87059	281-3342	Food pantry serving Tijeras area and east to County line. Food once/ month per family.	Tues Wed	9:00 - 1:00 4:00 - 6:00	Medicaid Fee Sliding Fee No Charge X

Provider	Physical Address			Phone	Services	Days	Hours	Fee/Billing
Echo CSFP Program								
	513 Williams Ave Estancia	NM	87016	242-6777	Monthly Food Packages for Kids who are not on WIC and Seniors, 3rd Monday	3rd Monday	10:00am - 12:00Pm	Medicaid Fee Sliding Fee No Charge X
Loaves and Fishes								
	379 State Rd 344 Edgewood	NM	87015	832-6781 228-7300	Food distribution at Calvary Chapel Church; 1st & 3rd Tuesday; 9:45am - 10:45 am	1st & 3rd Tue	9:45 - 10:45 AM	Medicaid Fee Sliding Fee No Charge X
Moriarty Church of the Nazarene								
Mary Jimenez	1208 Poplar Moriarty	NM	87035	832-4390 620-0715	Food Pantry -- call Jennifer 832-4895 for days	anytime before 5:00 PM		Medicaid Fee Sliding Fee No Charge X
Assistance - Housing								
Central NM Housing Corp.								
	703 Osuna Rd NE, Ste 2 Albuquerque	NM	87113	345-4949 1-877-345-4949	Weatherization for low-income renters/owners: heating & cooling; preference given to elderly (over 60), persons w/ disabilities, SSI & TANF automatically eligible.	Mon - Fri	8:00 - 5:00	Medicaid Fee Sliding Fee No Charge X
Depot Apartments								
	704 W. Maple Moriarty	NM	87035	832-6746	Supplemental housing for low income individuals.	Mon - Tue Wed - Fri	8:00 - 1:00 2:30 - 4:30	Medicaid Fee Sliding Fee No Charge X
Housing and Urban Development (HUD)								
	107-1/2 Roosevelt Mountainair	NM	87036	847-2416	Rental Assistance for those within income eligibility. Police background check required to apply.		By Appointment	Medicaid Fee Sliding Fee No Charge X
Assistance - Medical								
Indigent Fund								
Torrance County	Estancia	NM	87016	246-4756	Help with Unpaid Medical Bills	Call for Information		Medicaid Fee Sliding Fee No Charge

Provider	Physical Address	Phone	Services	Days	Hours	Fee/Billing
Resource Center						
Emergency Prescription Drug Assistance	2550 Cerrillos Road Santa Fe NM 87505	1-800-432-2080 505-476-4846	\$300.00 voucher for prescription drugs; Medicare Counseling, COLTS waiver application; D & E Waiver; MedBank; Adult Protective Services	Mon - Fri	8:00 - 5:00	Medicaid Fee Sliding Fee No Charge X
UNM Hospital Financial Services						
UNM Care Program	933 Bradbury SE, Ste 1120 Albuquerque NM 87106	272-2521 1-877-465-2368	UNM Care Program, Self-Pay Discount Program (for services obtained through UNM Hospital Health services only)	Mon - Fri	7:30 - 5:00	Medicaid Fee Sliding Fee No Charge
Assistance - Utilities						
LIHEAP						
NM Human Services Department	109 Tulane St. Moriarty NM 87035	832-5026	Utility Assistance	Mon - Fri	8:00 - 5:00	Medicaid Fee Sliding Fee No Charge X
Child Abuse -- SEE Abuse and Neglect						
						Medicaid Fee Sliding Fee No Charge
Child Care Providers						
Children, Youth & Families Department						
Child Care Services Bureau		505-841-4813	Statewide Child Care Assistance	Call for Information		Medicaid Fee Sliding Fee No Charge
Jelly Bean Junction						
	900 Howard Cavasos Blvd. N Moriarty NM 87035	832-6458	Child Care, ages 6 wks - 10 yrs	Mon - Fri	6:30A - 6:00P	Medicaid Fee Sliding Fee No Charge X
Loving Arms Day Care						
	30A East Church St. Edgewood NM 87015	281-8992	Child Care ages 2-12. One-time fee; will work with clients for payment arrangements	Mon - Fri	6:30A - 6:30P	Medicaid Fee Sliding Fee No Charge X

Provider	Physical Address	Phone	Services	Days	Hours	Fee/Billing
Step-Up Child Care						
	87 Saddle Spur Trail Edgewood NM 87015	286-4749	Child Care Ratio of 1-3. Ages Infants 6-8 weeks to 12 yrs.	Mon - Fri	7:00 - 6:00	Medicaid Fee X Sliding Fee No Charge
Child Development						
Alta Mira Specialized Family Services						
	301 5th St. Estancia NM 87016	384-0894	Child Development, Early Intervention, Respite	Mon - Fri	By Appointment only	Medicaid Fee X Sliding Fee No Charge
Earthchild						
	4 Cedar Breaks Ct. Edgewood NM 87015	281-2878	Preschool, Child Care & Montessori Program	Mon - Fri	7:00 - 6:00	Medicaid Fee X Sliding Fee No Charge
Head Start - Admin Office & Estancia Center						
Presbyterian Medical Services	600 10th St. Estancia NM 87016	384-2302	Preschool Education Program	Mon - Fri	8:00 - 5:00	Medicaid Fee Sliding Fee No Charge X
Head Start - Moriarty Center						
Presbyterian Medical Services	706 Union St. Moriarty NM 87035	832-2588 832-1922	Preschool Education Program	Mon - Fri	8:00 - 5:00	Medicaid Fee Sliding Fee No Charge X
Head Start - Mountainair Center						
Presbyterian Medical Services	109 Sunset Mountainair NM 87036	847-0547	Preschool Education Program/ Income eligible	Mon - Fri	8:00 - 5:00	Medicaid Fee Sliding Fee No Charge X
My Happy Place Children's Center						
	48 Horton Rd. South Edgewood NM 87015	286-4077	Day care - preschool & after school. Ages 6 wks and up to 10 yrs.	Mon - Fri	7:00 - 6:00	Medicaid Fee X Sliding Fee X No Charge
New Mexico Kids						
NM Children, Youth & Families Department	1634 University Blvd NE Albuquerque NM 87102	1-800-691-9067 277-7900-In Abq area	Child care resource & referral for families & child care professionals. Info on early childhood development & training.	Mon - Fri	8:00 - 5:00	Medicaid Fee Sliding Fee No Charge X

Provider	Physical Address	Phone	Services	Days	Hours	Fee/Billing
UNM Carino Early Childhood TTAP						
UNM Continuing Education	1634 University Blvd. Albuquerque NM 87102	277-3155 277-1262	Toy & Resource Library: toys and games; educational materials; videos, books and parenting resources	2nd Wed	9:00 - 11:30	Medicaid Fee Sliding Fee No Charge X
Chiropractic						
Mountain Chiropractic & Kinesiology						
Randy Hutchins	11814 Hwy 337 Tijeras NM 87059	281-9090	Musculo-skeletal, sports injuries, allergies, stress management, nutrition, TMJ, PMS. Closed for lunch: 12:00 - 2:20.	Mon Tues - Thurs Fri	10-12; 2:20-6 9:40-12; 2:20-6 9:40 - 4:00	Medicaid Fee Sliding Fee No Charge X
Seibert Chiropractic						
	12418 B Hwy 14N Cedar Crest NM 87008	286-2861	Chiropractic care of musculo-skeletal and internal disorders	Mon - Fri	8:00 - 5:00	Medicaid Fee Sliding Fee No Charge X
Counseling / Psychiatric Services						
Conflict Management, Inc.						
	7920 Mountain NE Albuquerque NM 87110	884-9411	DWI assessments. In-home & office counseling including substance abuse, reintegration, domestic violence & parenting.	By Appointment	Day & Evening By Appointment	Medicaid Fee Sliding Fee No Charge X
Hogares Inc.						
	1208 Route 66, Suite D Moriarty NM 87035	832-9322	Children's Behavioral Health, in home and office services, behavioral case management	Mon - Fri	8:30 5:00	Medicaid Fee Sliding Fee No Charge X
Life Directions Counseling						
On Corners Enterprises	Moriarty Magistrate Court Moriarty NM 87035	934-0603	Problem Identification & Referral; sliding fee only for DWI services.	Go to Court	By Appointment	Medicaid Fee Sliding Fee No Charge X
Mountain Community Counseling						
	12064 N Hwy 14 Cedar Crest NM 87008	281-9542	Alternative and Traditional Therapy, Hypnotherapy, Substance abuse therapy, and PTSD therapy	Mon - Sat Special Appts	9:00- 6:00	Medicaid Fee Sliding Fee No Charge X
Mustang Health Center						
Mountainair High School	901 West 3rd Street Mountainair NM 87036	847-2211 x1019	Primary care and behavioral health services to staff and students of Mountainair schools	Tue & Wed	7:30 - 4:30	Medicaid Fee Sliding Fee No Charge X

Provider	Physical Address	Phone	Services	Days	Hours	Fee/Billing
PMS Esperanza Medical Center						
	903 C 5th St. Estancia NM 87016	384-2777	Counseling & Psychiatric; Case management		By Appointment	Medicaid X Fee X Sliding Fee X No Charge
PMS Mountainair Family Health Center						
	105 E. Piñon St Mountainair NM 87036	847-2271	Counseling & Psychiatric		By Appointment	Medicaid X Fee X Sliding Fee X No Charge
SunRise Counseling Services						
	1945 Route 66, Suite H Edgewood NM 87015	505-891-1001	Alcohol & Drug Abuse counseling, Domestic Violence counseling; mental health. Accept all insurances.	Mon - Sat 24/7	By Appointment Crisis	Medicaid X Fee X Sliding Fee X No Charge
Torrance County Counseling						
	1701 Old Route 66, Suite D Moriarty NM 87035	832-9135 705-0246	Counseling/ Drug and Alcohol Testing/ Substance abuse counseling.	Mon - Sat Closed Tue 1:00 - 2:00	9:00 - 7:00	Medicaid X Fee X Sliding Fee X No Charge
Trish Daino, Private Therapist						
	All of Torrance County	803-7110 505-660-8626	In-home & office counseling: children, adults, couples, family, individual, teens, domestic violence, non-violence, women's empowerment	By Appointment	Day & Evening By Appointment	Medicaid X Fee X Sliding Fee No Charge
Valencia Counseling Services						
	1011 Allen Street Estancia NM 87016	384-0220	Counseling; psycho-social rehabilitation	Mon - Fri Lunch	8:00 - 5:00 12:00 - 1:00	Medicaid X Fee X Sliding Fee X No Charge
YWCA Carino						
ABQ	210 Truman NE Albuquerque NM 87108	254-9922	Referral for child, family, & behavioral counseling. Guidance to obtain licensing as child care provider.	Mon - Fri	8:00 - 5:00	Medicaid Fee Sliding Fee No Charge X
Counseling/ Psychiatric Services						
McKee Counseling Services						
Jack McKee	1209 Rt 66 West, Suite A Moriarty NM 87035	505-407-6489	Adolescent counseling; Substance abuse counseling	Mon - Thur	9:00 - 5:00	Medicaid X Fee X Sliding Fee X No Charge

Provider	Physical Address			Phone	Services	Days	Hours	Fee/Billing	
Dental									
Dr. David Stevens									
	2006 Rte 66 West Moriarty	NM	87035	832-5556	General Dentistry	Mon - Thurs	8:00 - 12:00 1:00 - 5:00	Medicaid Fee	X
								Sliding Fee No Charge	
East Mountain Orthodontics									
	1917 Old Route 66 Edgewood	NM	87015	286-1193 293-0687	Full Orthodontics	Wed 2 x month call for appt.	8:30 - 12:00	Medicaid Fee	X X
								Sliding Fee No Charge	
Edgewood Family Dentistry									
	1917 Old Route 66 Edgewood	NM	87015	281-0373	General Dentistry. Will have new location by July 1 -- call for info.	Mon - Thurs	9:00 - 5:00	Medicaid Fee	X
								Sliding Fee No Charge	
First Choice Community Healthcare									
	8 Medical Center Road Edgewood	NM	87015	281-3406	General Dentistry - Bilingual	Mon & Fri	7:30 - 5:00	Medicaid Fee	X X
								Sliding Fee No Charge	X
PMS Esperanza Medical Center									
	903 C 5th St. Estancia	NM	87016	384-2777	General Dentistry	Mon - Fri Closed Wed	8:00 - 1:45	Medicaid Fee	X X
								Sliding Fee No Charge	X
Disability Agencies									
Alta Mira Specialized Family Services									
	301 5th St. Estancia	NM	87016	384-0894	Family DD Waiver services: Respite, Personal Support, and Family Living. Home visits available	Mon - Fri	By Appointment Only	Medicaid Fee	X X
								Sliding Fee No Charge	
Disability Rights NM									
Lily Martinez	1720 Louisiana NE Ste 204 Albuquerque	NM	87110	256-3100 1-800-432-4682	Legal rights for people with disabilities.	Mon - Fri	8:30 - 5:00	Medicaid Fee	
								Sliding Fee No Charge	X

Provider	Physical Address			Phone	Services	Days	Hours	Fee/Billing	
Division of Vocational Rehabilitation									
State of New Mexico	105 Broadway	NM	87035	832-5038 1-888-901-7864	Assistance for persons with disabilities, mental or physical, to get back to work	Mon - Fri By Appointment	8:00-5:00	Medicaid Fee Sliding Fee No Charge	X
Independent Living Resource Center (ILRC)									
	1208 Route 66	NM	87035	832-1128	Independent living skills training, advocacy and support services for People w/ Disabilities	Mon - Fri	8:00 - 11:00 12:00 - 3:00 By Appointment	Medicaid Fee Sliding Fee No Charge	X
New Beginnings									
	221 5th Estancia	NM	87016	384-1045	Dayhab for people with Developmental Disabilities, usually age 21 or older. No charge under the DD waiver	Mon - Fri Sat	8:00 - 4:30 Depends	Medicaid Fee Sliding Fee No Charge	X X X
Su Vida Services									
	8501 Candelaria NE, Bldg A Albuquerque	NM	87110	299-2494 1-800-292-9952	Support to East Mountain area for Medicaid approved family members w/ disabilities -- day activities; access to community services	Mon - Fri	8:30 - 4:30	Medicaid Fee Sliding Fee No Charge	X
Domestic Violence									
Sanctuary Zone									
Madrid Bail Bond Building	903 N 5th St Bldg B Ste 1&6 Estancia	NM	87016	384-0381 384-3001	Assistance & referral for victims of domestic violence, gift shop, 12- step program	Tue - Sat	8:00 - 5:00	Medicaid Fee Sliding Fee No Charge	X X
Torrance County Domestic Violence Program									
Torrance County Project Office	809 S 1st St., Suite B Moriarty	NM	87035	832-6567 705-0925	Victim Assistance; Emergency Services; Victim & Offender Counseling	Mon - Fri	8:00 - 5:00	Medicaid Fee Sliding Fee No Charge	X
Trish Daino, Private Therapist									
	All of Torrance County			803-7110 505-660-8626	In-home & office counseling: children, adults, couples, family, individual, teens, domestic violence, non-violence, women's empowerment	By Appointment	Day & Evening By Appointment	Medicaid Fee Sliding Fee No Charge	X X
Education - Advisement									
NM Educational Opportunity Center									
	777 Old Route 66 Moriarty	NM	87035	832-6774	Academic advisement; educational counseling; assistance w/ financial aide; GED pretest; GED on-line registration; tutoring services	Mon - Fri	8:00 - 5:00	Medicaid Fee Sliding Fee No Charge	X

Provider	Physical Address	Phone	Services	Days	Hours	Fee/Billing
University of New Mexico						
Educational Opportunity Center	777 Old Route 66 Moriarty NM 87035	832-6774 249-7601	Student educational program advisement -- GED, college or community college, financial aid assistance	Mon - Thurs	8:00 - 1:00	Medicaid Fee Sliding Fee No Charge X
Education - Vocational						
Plants of Thanksgiving						
Agricultural/ Horticultural School	12 Crestview Lane Edgewood NM 87015	350-0595	Vocational and practical workshops and training	Call for Schedule	Call for Schedule	Medicaid Fee Sliding Fee No Charge X
Emergency Services						
Torrance County Dispatch						
	751 Salt Missions Trail McIntosh NM 87032	384-9631	Dispatch for County -- fire, law enforcement and EMS	Every day	24 hours	Medicaid Fee Sliding Fee No Charge X
Torrance County Emergency Manager						
	205 9th St. Estancia NM 87016	246-4748		Mon - Thurs Leave Message will call	7:30 - 5:30	Medicaid Fee Sliding Fee No Charge X
Home Health						
Above All Personal Care Services, LLC						
	2552 Hwy 41 Moriarty NM 87035	832-5553 281-4412	Home Healthcare and Personal Healthcare. DD Waiver & D&E Waiver. Adults 21 and over.	Mon - Fri Person on call 24/7	8:30 - 4:30	Medicaid Fee Sliding Fee No Charge X
Income Support						
Child Support Enforcement						
		1-800-288-7207	Child support enforcement and assistance			Medicaid Fee Sliding Fee No Charge X

Provider	Physical Address			Phone	Services	Days	Hours	Fee/Billing
Income Support & Medicaid Assistance								
NM Department of Human Services								
Income Support Division	109 Tulane Moriarty	NM	87035	832-5026 1-866-335-7293	Cash Assistance, Food Stamps, Emergency Food Assistance, Child Support Enforcement, LIHEAP, Medicaid	Mon - Fri	8:00 - 5:00	Medicaid Fee Sliding Fee No Charge X
Judicial								
7th Judicial District Court								
	903 N 5th St. Estancia	NM	87016	384-2974	All types of court cases (i.e., divorce, guardianship, criminal, domestic violence, probate, etc.)	Mon - Fri	8:00 - 4:00	Medicaid Fee Sliding Fee No Charge X
Children, Youth and Families Department								
New Mexico State Juvenile Justice Division	214 S. 5th St. Estancia	NM	87016	384-2780 Hotline 841-6100	Juvenile Probation and Parole	Mon - Fri 24 Hr Calls	8:00 - 5:00	Medicaid Fee Sliding Fee No Charge X
Estancia Magistrate Court								
Town of Estancia	903 N 5th Estancia	NM	87016	384-2926 832-4476	1st felony appearances, traffic and civil matters	Thur - Fri	8:00 - 4:00	Medicaid Fee Sliding Fee No Charge X
Estancia Municipal Court								
Town of Estancia	512 W Williams Estancia	NM	87016	384-0512	Traffic/ Ordinance Cases	Mon - Fri	9:00 - 12:30 1:30 - 5:30	Medicaid Fee Sliding Fee No Charge X
Moriarty Magistrate Court								
City of Moriarty	1100 Central Moriarty	NM	87035	832-4476	DWI, Traffic, Criminal, Domestic Violence, Bench Warrant, Civil Cases	Mon Tues - Fri	8:00 - 3:00 8:00 - 4:00	Medicaid Fee Sliding Fee No Charge X
Moriarty Municipal Court								
City of Moriarty	201 Broadway Moriarty	NM	87035	832-6354	Traffic offenses to 2nd DUIs; court costs & fines	Mon - Fri	8:00 - 5:00	Medicaid Fee Sliding Fee No Charge X
Torrance County District Attorney								
	903 N 5th St. Estancia	NM	87016	384-2800		Mon - Fri Lunch	8:00 - 5:00 12:00 - 1:00	Medicaid Fee Sliding Fee No Charge X

Provider	Physical Address	Phone	Services	Days	Hours	Fee/Billing
Law Enforcement						
Adult Probation and Parole						
New Mexico State Corrections Department	809 S 1st St., Suite C Moriarty NM 87035	832-6832 835-1847	Supervision of probationers and parolees as ordered by the Courts and/or Probation Department	Mon - Fri	8:00 - 5:00	Medicaid Fee X Sliding Fee No Charge X
CYFD Underage Drinking Initiative						
City of Moriarty	201 Broadway Moriarty NM 87035	832-4406	Enforcement of underage drinking laws	Mon - Fri	8:00 - 5:00	Medicaid Fee X Sliding Fee No Charge X
Edgewood Police Dept						
	1966 Old Rt. 66 Edgewood NM 87015	281-1060 281-5717	EMERGENCY: DIAL 911	Mon - Fri	8:00 - 4:00	Medicaid Fee X Sliding Fee No Charge X
Estancia Police Department						
Town of Estancia	1000 Highland Estancia NM 87016	384-4282 emergency: dial 911	EMERGENCY: DIAL 911 or Dispatch at 384-2706	Mon - Thur Fri	8:00 - 5:00 Call 384-9631	Medicaid Fee X Sliding Fee No Charge X
Moriarty Police Department						
City of Moriarty	201 Broadway Moriarty NM 87035	832-6060 emergency: dial 911	EMERGENCY: DIAL 911 or Dispatch at 384-2705 or 384-2706	Mon - Fri	8:00 - 5:00	Medicaid Fee X Sliding Fee No Charge X
Mountainair Police Department						
Town of Mountainair	107 N Roosevelt Mountainair NM 87036	847-2806 emergency: dial 911	EMERGENCY: DIAL 911 OR 847-2201	Mon - Fri	8:00 - 4:30	Medicaid Fee X Sliding Fee No Charge X
New Mexico State Police						
	Edgewood NM 87035	281-0096 Emergency: dial 911	EMERGENCY: DIAL 911		8:00 - 4:00	Medicaid Fee X Sliding Fee No Charge X
Torrance County Detention Facility						
Corrections Corporation of America (CCA)	209 East Alan Ayers Estancia NM 87016	384-2711	Torrance County Detention Facility	Call for info Administrative Hrs Mon	8:00 - 5:00	Medicaid Fee X Sliding Fee No Charge X

Provider	Physical Address	Phone	Services	Days	Hours	Fee/Billing
Torrance County Sheriff						
	205 9th St. (9th & Allen) Estancia NM 87016	246-4773 emergency: dial 911	Law enforcement and Compliance Monitoring. EMERGENCY: DIAL 911 or Dispatch at 384-2705/ 2706	Mon - Fri	8:00 - 5:00	Medicaid Fee Sliding Fee No Charge X
Libraries						
East Mountain Library						
	#1 Old Tijeras Road Hwy 333 Tijeras NM 87059	281-8508 768-5140	Library/ Small fee for an internet access card	Tue, Wed, Fri, Sat Thurs	10:00 - 6:00 11:00 - 7:00	Medicaid Fee Sliding Fee No Charge X
Edgewood Community Library						
	95 Hwy 344 North Edgewood NM 87015	281-0138	Wireless internet 24/7 with 3 public access stations	Mon - Fri Sat	12:00 - 6:00 10:00 - 3:00	Medicaid Fee Sliding Fee No Charge X
Estancia Public Library						
Town of Estancia	600 S. Tenth St. Estancia NM 87016	384-9655	Audio library; 12 computers with internet; print, fax & copy; preschool story hour; summer reading program; mtg room; tax forms	Mon - Thurs Fri Sat	10:00 - 7:00 10:00 - 5:00 10:00 - 4:00	Medicaid Fee Sliding Fee No Charge X
Moriarty Community Library						
City of Moriarty	202 Broadway Moriarty NM 87035	832-2513	Free WiFi access & public access computers; GED Classes; Books on Tape & CD, videos & DVDs, Spanish language books, family & story times	Mon - Thur Fri Sat	9:00 - 7:00 9:00 - 5:00 9:00 - 3:00	Medicaid Fee Sliding Fee No Charge X
Mountainair Library						
	109 N Roosevelt Mountainair NM 87036	847-9676	Call for Friday hours. Bookmobile 1 Thursday per month 9:00 - 4:00.	Mon - Wed Thurs Fri / Sat	9:00 - 12:00 9 - 12; 2 - 6 10 - 3 / 9 - 1	Medicaid Fee Sliding Fee No Charge X
Literacy Programs						
Read "Write" Adult Literacy Program						
Moriarty Community Library	902 Old Route 66 Moriarty NM 87035	832-9469	Basic Literacy, English as a Second Language, Computer Literacy, Life Skills	Mon - Fri Sat By Appointment	9:00 - 5:00 9:00 - 3:00	Medicaid Fee Sliding Fee No Charge X

Provider	Physical Address	Phone	Services	Days	Hours	Fee/Billing
Medicaid Assistance						
Torrance County Project Office						
	809 S 1st St., Suite A Moriarty NM 87035	832-0332	Medicaid & State Coverage Insurance enrollment assistance; Presumptive Eligibility determination. Bilingual.	Mon - Thurs Extended hrs 2nd Tues Extended hrs 3rd Sat	7:30 - 5:30 7:30 - 7:00 8:00 - 12:00	Medicaid Fee Sliding Fee No Charge X
Torrance County Project Office Outreach						
Mustang Health Center	901 West 3rd Street Mountainair NM 87036	832-0332	Medicaid & State Coverage Insurance enrollment assistance; Presumptive Eligibility determination	2nd Wed	11:00 - 1:00	Medicaid Fee Sliding Fee No Charge X
Nutrition						
WIC - Torrance County Public Health - Estancia						
State of NM Department of Health	300 S 8th St. Estancia NM 87016	384-2351 384-5005	WIC nutrition every Thurs and Fri, except 2nd Thurs of the month	Mon - Fri Lunch	8:00 - 5:00 12:00 - 1:00 By Appointment	Medicaid Fee Sliding Fee No Charge X
WIC - Torrance County Public Health - Moriarty						
State of NM Department of Health	1110 Old Route 66 Moriarty NM 87035	832-6782	WIC nutrition Mon, Tues, Wed	Tues, Wed, Fri Lunch	8:00 - 5:00 12:00 - 1:00 By Appointment	Medicaid Fee Sliding Fee No Charge X
WIC - Torrance County Public Health - Mountainair						
State of NM Department of Health	903 W 3rd - High School Mountainair NM 87036	384-2351 832-6782	WIC nutrition 2nd Thurs. of the month	2nd Thurs of the month	8:30 - 5:00	Medicaid Fee Sliding Fee No Charge X
Obstetrics/ Gynecology						
Julian F. Rowe, MD, MPH, FACOG						
Judy Lui, MD, DOM	1950-C Old Route 66 Edgewood NM 87015	286-1900	Obstetrics/Gynecology/Chinese medicine	Thurs Lunch Wed afternoon	8:00 - 5:00 1:00 - 2:00 emergency (12-5)	Medicaid Fee Sliding Fee No Charge X X
Pharmacy						
May's Pharmacy						
	600 Central Route 66 Moriarty NM 87035	832-9988	Pharmacy	Mon - Fri Sat	9:00 - 6:00 10:00 - 4:00	Medicaid Fee Sliding Fee No Charge X X X

Provider	Physical Address	Phone	Services	Days	Hours	Fee/Billing
Mountainair Meds and More						
	111 W Broadway Mountainair NM 87036	847-0242	Pharmacy -- accept most insurance plans, Medicaid, and Medicare Part D	Mon - Fri	9:00-5:00	Medicaid X Fee X Sliding Fee No Charge
Smith's Pharmacy						
	02-B NM Hwy 344 Edgewood NM 87015	286-9040	Pharmacy / \$4 Dollar Plan	Mon - Fri Sat Sun	9:00 - 9:00 9:00 - 7:00 10:00 - 6:00	Medicaid X Fee X Sliding Fee No Charge
Walgreens Pharmacy						
	5 Walker Rd. Edgewood NM 87015	281-0178	Pharmacy - drive-thru available	Mon - Fri Sat Sun	8:00A - 10:00P 9:00 - 6:00 10:00 - 6:00	Medicaid X Fee X Sliding Fee No Charge
Wal-Mart Pharmacy						
	66 State Rd. Hwy 344 Edgewood NM 87015	286-3043 286-3053	Pharmacy - \$4 Dollar Plan	Mon - Fri Sat Sun	9-1:30; 2:30-9 9-1:30; 2:30-7 1-1:30; 2:30-6	Medicaid X Fee X Sliding Fee No Charge
Physical Therapy						
Active Solutions						
Physical Therapy	#1 Linnie Court Edgewood NM 87015	286-7838	Physical Therapy/ Occupational Therapy	Mon - Thur Fri	8:00 - 7:00 8:00 - 5:00	Medicaid X Fee X Sliding Fee No Charge
East Mountain Physical Therapy						
	2005-A Route 66 W. Moriarty NM 87035	832-4011 281-8463	Physical Therapy	Mon, Wed Fri	8:00 - 5:00 8:00 - 5:00	Medicaid X Fee X Sliding Fee No Charge
	12127 N Hwy 14, Ste B3 Cedar Crest NM	286-3678	Physical Therapy	Mon, Wed Fri	8:00 - 5:00 8:00 - 5:00	Medicaid X Fee X Sliding Fee No Charge
	8 George Ct., Suite D Edgewood NM 87015	281-8463	Physical Therapy	Mon, Tues Thurs	8:00 - 5:00 8:00 - 5:00	Medicaid X Fee X Sliding Fee No Charge
Skyline Therapy Services						
	1090 Mountain Valley Rd. Edgewood NM 87015	281-1811	Physical, Occupational and Speech Therapy - Specialize in Hypno Therapy - Salud Provider	Mon - Fri Closed for Lunch	8:00 - 5:00 12:00 - 1:00	Medicaid X Fee X Sliding Fee No Charge

Provider	Physical Address	Phone	Services	Days	Hours	Fee/Billing
Pregnancy						
Torrance County Public Health - Estancia						
State of NM Department of Health	300 S 8th St. Estancia NM 87016	384-2351 384-5005	Pregnancy testing, family planning, child immunizations, breast & cervical cancer screens, prenatal care for clients w/out insurance. In Mountainair 2nd Tues of month.	Mon - Fri Lunch	8:00 - 5:00 12:00 - 1:00 By Appointment	Medicaid X Fee X Sliding Fee X No Charge X
Torrance County Public Health - Moriarty						
State of NM Department of Health	1110 Old Route 66 Moriarty NM 87035	832-6782	Pregnancy testing, family planning, child immunizations, STD testing, and WIC nutrition services	Tues - Fri Lunch	8:00 - 6:00 12:00 - 1:00 By Appointment	Medicaid X Fee X Sliding Fee X No Charge X
Pregnancy & Parenting						
Care Net East Mountain Pregnancy Center						
	150 NM Hwy 344, Suite K Edgewood NM 87015	281-5408 1-505-880-0882	Pregnancy Testing & Limited Ultrasounds, Education, Counseling, Parenting & Childbirth Classes, Material Assistance, Post abortive counseling	Mon -Thurs Call first.	1:30 - 5:30	Medicaid Fee Sliding Fee No Charge X
Torrance County Project Office						
Amigas de La Familia	809 S 1st St., Suite A Moriarty NM 87035	832-0332	Car Seats; Prenatal & Developmental classes; Medicaid, Presumptive Eligibility & State Coverage Insurance enrollment; Home Visits; Diapers.	Mon - Thurs	7:30 - 5:30	Medicaid Fee X Sliding Fee No Charge X
Primary Care						
East Mountain Family Health						
	1841 Route 66, Ste B Edgewood NM 87015	286-3100	Primary Care -- all ages; Prenatal care	Mon - Fri Lunch	9:00 - 5:00 12:00 - 1:00	Medicaid X Fee X Sliding Fee X No Charge
Edgewood Pediatric Clinic						
	02 Eunice Ct., Bldg. B Edgewood NM 87015	281-4620	Primary Care, Pediatric Care	Mon - Thur Lunch Fri	9:00 - 5:00 1:00 - 2:00 9:00 - 12:00	Medicaid X Fee X Sliding Fee No Charge
First Choice Community Healthcare						
	8 Medical Center Road Edgewood NM 87015	281-3406	Primary Care, General Practice, Health Education, Laboratory Services, MAP - Bilingual	Mon - Thur Fri Sat	7:30 - 7:00 7:30 - 5:00 8:00 - 2:00	Medicaid X Fee X Sliding Fee X No Charge

Provider	Physical Address	Phone	Services	Days	Hours	Fee/Billing
McLeod Medical Center						
	3 George Ct., Suite C Edgewood NM 87015	286-2396	Primary Care, Family Practice, DOT Physicals	Mon - Fri Closed	8:00 - 5:00 12:00 - 1:00	Medicaid X Fee X Sliding Fee No Charge
	1108 Old Route 66 Moriarty NM 87035	832-4434 emergency 263-9509	Primary Care, Family Practice, DOT Physicals	Mon Tue - Thur Fri.	8:00 - 6:00 7:30 - 6:00 8:00 - 5:30	Medicaid X Fee X Sliding Fee No Charge
	12127 B N. Hwy 14, Ste. 5 Cedar Crest NM 87008	505-281-2460	Primary Care, Family Practice, DOT Physicals	Mon - Fri Closed	8:00 - 5:00 12:00 - 1:00	Medicaid X Fee X Sliding Fee No Charge
Mustang Health Center						
Mountainair High School	901 West 3rd Street Mountainair NM 87036	847-2211 x1019	Primary care and behavioral health services to staff and students of Mountainair schools	Tue - Wed	7:30 - 4:30	Medicaid X Fee Sliding Fee No Charge
Nurse Advice Line						
Nurse Advice New Mexico		1-877-725-2552	FREE 24-hour Nurse Advice; English & Spanish			Medicaid Fee Sliding Fee No Charge X
PMS Esperanza Medical Center						
	903 C 5th St. Estancia NM 87016	384-2777	Primary Care, Family Practice	Mon - Fri Lunch	8:00 - 5:00 12:30 - 1:30	Medicaid X Fee X Sliding Fee X No Charge
PMS Mountainair Family Health Center						
	105 E. Piñon St. Mountainair NM 87036	847-2271 emergency 272-2111	Primary Care, General Practice	Mon - Fri Lunch	8:30 - 5:00 12:00 - 1:30	Medicaid X Fee X Sliding Fee X No Charge
Psychiatric -- SEE COUNSELING						
						Medicaid Fee Sliding Fee No Charge

Provider	Physical Address	Phone	Services	Days	Hours	Fee/Billing
Public Health						
H1N1 Hot Line						
		1-877-304-4161	Nurse advice line, where to find H1N1 shots, general flu & immunization info, English & Spanish	24 / 7		Medicaid Fee Sliding Fee No Charge X
NM Vital Records & Health Statistics						
Stanford Public Health Office	1111 Stanford NE Albuquerque NM 87125	841-4183 841-4185	Obtain original Birth Certificates & Death Certificates. To order by mail, email www.vitalcheck.com	Mon - Fri	8:00 - 5:00	Medicaid Fee Sliding Fee No Charge X
Torrance County Public Health - Estancia						
State of NM Department of Health	300 S 8th St. Estancia NM 87016	384-2351 384-5005	Pregnancy test, family planning, child immunizations, WIC nutrition, prenatal care for clients w/out insurance; screenings: TB, STD, breast & cervical cancer	Mon - Fri Mountainair Mountainair WIC	8-12; 1-5 2nd Tues 2nd Thur	Medicaid Fee Sliding Fee No Charge X X X X
Torrance County Public Health - Moriarty						
State of NM Department of Health	1110 Old Route 66 Moriarty NM 87035	832-6782	Pregnancy testing, family planning, child immunizations, STD testing, and WIC nutrition services	Tues - Fri Lunch	8:00 - 6:00 12:00 - 1:00 By Appointment	Medicaid Fee Sliding Fee No Charge X X X X
Schools						
East Mountain High School						
	25 La Madera Road Sandia Park NM 87047	281-7400 281-4173	Charter School, grades 9-12	Mon - Fri	8:00 - 4:00	Medicaid Fee Sliding Fee No Charge X X X
Edgewood Christian School						
Edgewood Believers Fellowship	87 NM Hwy 344 Edgewood NM 87015	281-5091 286-8344	Christian School, age 4 Kindergarten - Grade 8	Mon - Fri	8:00 - 4:00	Medicaid Fee Sliding Fee No Charge X X X
Edgewood Elementary School						
Moriarty-Edgewood Municipal Schools	285 Dinkle Rd. Edgewood NM 87015	832-5740	Public Education, Grades Pre-6	Mon - Fri	8:55 - 3:30	Medicaid Fee Sliding Fee No Charge X X X
Edgewood Middle School						
Moriarty-Edgewood Municipal Schools	17 Venus Rd. Edgewood NM 87015	832-5880	Public Education, Grades 7-8	Mon - Fri	8:24 - 3:34	Medicaid Fee Sliding Fee No Charge X X X

Provider	Physical Address	Phone	Services	Days	Hours	Fee/Billing
Estancia High School						
Estancia Municipal School District	709 West Hopewell Estancia NM 87016	384-2002	Public Education, Grades 9-12	Mon - Fri	8:00 - 4:00	Medicaid Fee Sliding Fee No Charge X
Estancia Lower Elementary School						
Estancia Municipal School District	119 North 7th Estancia NM 87016	384-2005	Public Education, Grades K-1	Mon - Fri	8:10 - 3:00	Medicaid Fee Sliding Fee No Charge X
Estancia Middle School						
Estancia Municipal School District	709 West Hopewell Estancia NM 87016	384-2003	Public Education, Grades 7-8	Mon - Fri	8:00 - 4:00	Medicaid Fee Sliding Fee No Charge X
Estancia Municipal School District						
	300 N 7th Street Estancia NM 87016	384-2000	Superintendent	Mon - Fri during school year	8:00 - 4:00	Medicaid Fee Sliding Fee No Charge X
Estancia Upper Elementary School						
Estancia Municipal School District	300 North 7th Estancia NM 87016	384-2004	Public Education, Grades 3-6	Mon - Fri	7:30 - 3:30	Medicaid Fee Sliding Fee No Charge X
Estancia Valley Learning Center						
Estancia High School	602 West Hopewell Estancia NM 87016	384-2002 Alan Carson	Non-traditional Secondary Education; 9th grade - adult	Mon, Wed, Fri Tues, Thurs	8:00 - 3:30 8:00 - 7:00	Medicaid Fee Sliding Fee No Charge X
Liberty Ranch School						
Liberty Ranch Church	#3 Hwy 55 Bluegrass Rd. Estancia NM 87016	384-2530	Private Education, Grades K-12	Tue - Fri	9:30 - 5:00	Medicaid Fee Sliding Fee No Charge X
Moriarty Elementary School						
Moriarty-Edgewood Municipal School District	2015 School Loop Moriarty NM 87035	832-4927	Public Education, Special Needs, Grades Pre-6	Mon - Fri	8:00 - 4:00	Medicaid Fee Sliding Fee No Charge X

Provider	Physical Address			Phone	Services	Days	Hours	Fee/Billing
Moriarty High School								
Moriarty-Edgewood Municipal School District	200 Center St. Moriarty	NM	87035	832-4254	Public Education, Grades 9-12	Mon - Fri	7:45 - 3:45	Medicaid Fee Sliding Fee No Charge X
Moriarty Middle School								
Moriarty-Edgewood Municipal Schools	200 Center St. Moriarty	NM	87035	832-6200	Public Education, Grades 7-8	Mon - Fri	8:00 - 3:00	Medicaid Fee Sliding Fee No Charge X
Moriarty-Edgewood Municipal School District								
	200 Center Ave. Moriarty	NM	87035	832-4471 832-5900	Superintendent	Mon - Fri	8:00 - 5:00	Medicaid Fee Sliding Fee No Charge X
Mountainair Elementary School								
Mountainair School District	405 W Broadway Mountainair	NM	87036	847-2231	Public Education, Grades Pre-5	Mon - Fri	1:30 - 3:45	Medicaid Fee Sliding Fee No Charge X
Mountainair High School								
Mountainair School District	901 W 3rd Mountainair	NM	87036	847-2211 847-2480	Public Education, Grades 6-12	Mon - Fri	8:00 - 3:30	Medicaid Fee Sliding Fee No Charge X
Mountainair School District								
	512 N Ross Mountainair	NM	87036	847-2333	Superintendent	Mon - Fri	8:00 - 4:30	Medicaid Fee Sliding Fee No Charge X
Mountainview Elementary School								
Moriarty-Edgewood Municipal Schools	2422 Old Route 66 Moriarty	NM	87035	832-6827	Public Education, Grades Pre-6	Mon - Fri	7:30 - 4:00	Medicaid Fee Sliding Fee No Charge X
New Beginnings Christian Academy								
Mountainair Christian Center	205 W. Broadway Mountainair	NM	87036	847-2773	Christian School, grades K-12	Mon - Thurs	7:45 - 3:00	Medicaid Fee Sliding Fee No Charge X

Provider	Physical Address	Phone	Services	Days	Hours	Fee/Billing
Prince of Peace Lutheran School						
Prince of Peace Lutheran Church	12121 N NM Hwy 14 Cedar Crest NM 87008	281-6833 281-2430	Christian Education, Grades Pre-8	Mon - Fri	8:30 - 4:00	Medicaid Fee X Sliding Fee No Charge
Route 66 Elementary School						
Moriarty-Edgewood Municipal Schools	805 Barton Rd. Edgewood NM 87015	832-5760	Public Education, Grades Pre-6	Mon - Fri	8:00 - 4:00	Medicaid Fee Sliding Fee No Charge X
South Mountain Elementary School						
Moriarty-Edgewood Municipal Schools	577 NM Hwy 344 Edgewood NM 87015	832-5700	Public Education, Grades K - 6	Mon - Fri	8:00 - 4:00	Medicaid Fee Sliding Fee No Charge X
Van Stone Elementary School						
Estancia Municipal School District	809 West Joseph Estancia NM 87016	384-2005	Public Education, Grade 2 only	Mon - Fri	8:00 - 4:00	Medicaid Fee Sliding Fee No Charge X
Senior Services						
Edgewood Senior Center						
Santa Fe County	114 Quail Trail Edgewood NM 87015	281-2515	Senior Services, Classes in Ceramics, Leatherwork, Fine Arts & Open Crafts. \$1.50 lunches for Seniors 60 & over; \$8.25 for those under age 60.	Mon - Fri	8:00 - 4:00	Medicaid Fee X Sliding Fee No Charge X
Estancia Senior Center						
Presbyterian Medical Services	305 E Highland Estancia NM 87106	384-5010	For eligible seniors 60 and older: \$1.50 lunches -- donation only; homebound lunches also available; transportation services	Mon - Fri	9:00 - 2:00	Medicaid Fee Sliding Fee No Charge X
McIntosh Senior Center						
	16 Willow Lake (CR A71) McIntosh NM 87032	384-3064	Ceramics Class Wed AM. Senior services and meals -- call for information.	Call for info		Medicaid Fee X Sliding Fee No Charge X
Moriarty Senior Center						
Presbyterian Medical Services	120 Roosevelt Ave. Moriarty NM 87035	832-4425	Services for eligible seniors 60 and older: \$1.50 lunches -- donation only (homebound also available); transportation services	Mon - Fri	9:00 - 2:00	Medicaid Fee Sliding Fee No Charge X

Provider	Physical Address	Phone	Services	Days	Hours	Fee/Billing
Mountainair Senior Center						
Presbyterian Medical Services	107 North Summit Mountainair NM 87036	847-2885	Services for eligible seniors 60 and older. \$1.50 lunches -- donation only (homebound also available); transportation services	Mon - Fri	9:00 - 2:00	Medicaid Fee Sliding Fee No Charge X
Substance Abuse Prevention Programs						
DWI Memorial of Perpetual Tears						
Information	600 Broadway Moriarty NM 87035	832-4495 832-4614	NM National DWI Victims' Memorial; Victim Impact Panel information	Leave message		Medicaid Fee Sliding Fee No Charge X
Substance Abuse Prevention Task Force						
Partnership for a Healthy Torrance County	809 S 1st St., Suite A Moriarty NM 87035	832-0332	Community-based coalition for substance abuse prevention; meets 3rd Thursday of ea month; call for meeting time & location	Mon - Thurs Call for meeting times	7:30 - 5:30	Medicaid Fee Sliding Fee No Charge X
Torrance County DWI Program						
	205 9th St. Estancia NM 87016	246-4774	DWI Prevention Programs. One-person office -- PLEASE LEAVE MESSAGE; WILL CALL BACK	Call for Appt	Will call back	Medicaid Fee Sliding Fee No Charge X
Support Groups						
AA Alcoholics Anonymous						
Sts. Peter & Paul Catholic Church Rectory	9th & St. Joseph Estancia NM 87016	266-1900 266-3688 (Spanish)	12-Step Program	Thurs	7:00 PM	Medicaid Fee Sliding Fee No Charge X
AA Assistance						
Assistance		266-1900 266-3688 (Spanish)	Directory/Assistance/ Sell AA material	Sun - Sat Live person through the night	8:00- 10:00 10:00 pm- 8:00 am	Medicaid Fee Sliding Fee No Charge X
AA Came to Believe						
Madrid Bail Bonds	South of Judicial Complex Estancia NM 87016	266-1900 266-3688 (Spanish)	12-Step Program	Mon & Fri	7:30 PM	Medicaid Fee Sliding Fee No Charge X
AA Cedar Crest						
Mountainside Methodist Church	4 Penny Lane Cedar Crest NM 87008	266-1900 266-3688 (Spanish)	12-Step Program	Tues	7:00 PM	Medicaid Fee Sliding Fee No Charge X

Provider	Physical Address	Phone	Services	Days	Hours	Fee/Billing
AA Edgewood Valley Group						
Valley View Christian Church	170 NM Hwy 344 Edgewood NM 87015	266-1900 266-3688 (Spanish)	12-Step Program	Fri	8:00 PM	Medicaid Fee Sliding Fee No Charge X
AA Estancia Valley Group						
Church of Christ	Irene & Eunice 211 Irene street Moriarty NM 87035	266-1900 266-3688 (Spanish)	12-Step Program	Tues	7:00 PM	Medicaid Fee Sliding Fee No Charge X
AA McIntosh Group						
McIntosh Senior Center	NM Hwy 41 & Cty Rd. A71 McIntosh NM 87032	266-1900 266-3688 (Spanish)	12-Step Program	Tues	7:00 PM	Medicaid Fee Sliding Fee No Charge X
AA Mountainair Group						
Mountainair Methodist Church	Sunset & 3rd Mountainair NM 87036	266-1900 266-3688 (Spanish)	12-Step Program	Tues	6:30 PM	Medicaid Fee Sliding Fee No Charge X
AA New Beginnings						
Estancia	Building B, 903 N 5th St. Estancia NM 87016	266-1900 266-3688	12-Step Program	Fri	8:00 PM	Medicaid Fee Sliding Fee No Charge X
AA Old 66 Group						
Christ Unity Church	#3 Deanna Lane Edgewood NM 87015	266-1900 266-3688 (Spanish)	12-Step Program	Mon, Wed	7:00 PM	Medicaid Fee Sliding Fee No Charge X
AA Spanish Group						
Sts. Peter & Paul Catholic Church Hall	101 S. 9th St. Estancia NM 87016	266-3688 (Spanish) 266-1900	12-Step Program for Spanish speakers	Thurs	7:00 PM	Medicaid Fee Sliding Fee No Charge X
AA Tijeras High Country Group						
Holy Child Catholic Church	19 Camino del Santo Nino Tijeras NM 87059	266-1900 266-3688 (Spanish)	12-Step Program	Sun	7:00 PM	Medicaid Fee Sliding Fee No Charge X

Provider	Physical Address	Phone	Services	Days	Hours	Fee/Billing
AA Valley Girls (women only)						
Madrid Bail Bonds	Estancia NM 87016	266-1900 266-3688 (Spanish)	12-Step Program	Tues	7:00 PM	Medicaid Fee Sliding Fee No Charge X
AI-Anon Fix On Route 66 AF Group						
Good Shepherd Lutheran Church	Route 66 & Entrada del Norte Edgewood NM 87015	281-2013 262-2177	Support for families and friends of alcoholics	Sun Thur	4:00 PM 7:00	Medicaid Fee Sliding Fee No Charge X
AI-Anon High Country AF Group						
United Methodist Church	4 Penny Lane Cedar Crest NM 87008	262-2177 243-6135 (Spanish)	Support for families and friends of alcoholics	Fri	10:00 am	Medicaid Fee Sliding Fee No Charge X
AI-Anon How It Works AF Group						
United Methodist Church	4 Penny Lane Cedar Crest NM 87008	281-5117 243-6135 (Spanish)	Support for families and friends of alcoholics	Tues	7:00 PM	Medicaid Fee Sliding Fee No Charge X
Alateen						
Information	9004 Menaul NE Suite 12 Albuquerque NM 87112	262-2177	Substance Abuse, Prevention Support for friends and families of alcoholics.	24hrs		Medicaid Fee Sliding Fee No Charge X
Cocaine Anonymous						
Information		291-3888 344-9828	12 Step Program To talk to a member immediately CALL 907-5310	24hours		Medicaid Fee Sliding Fee No Charge X
Gamblers Anonymous						
Information		260-7272 260-7273	12-Step Program	Call for Meeting Places and Times	Look on-line	Medicaid Fee Sliding Fee No Charge X
Narcotics Anonymous						
Information		260-9889	12-Step Program. TO SPEAK WITH A RECOVERING ADDICT IMMEDIATELY, CALL 260-7195.	Call for Meeting Places and Times		Medicaid Fee Sliding Fee No Charge X

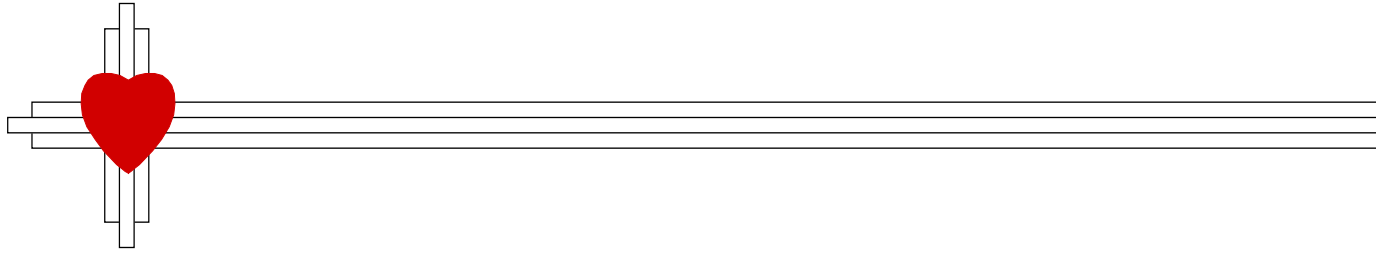
Provider	Physical Address	Phone	Services	Days	Hours	Fee/Billing
Narcotics Anonymous Last Rights Group						
Grace Baptist Church	I 40 E to Edgewood, 4 mi E on 66 Moriarty NM 87035	260-9889	12-Step Program. TO SPEAK WITH A RECOVERING ADDICT IMMEDIATELY, CALL 260-7195.	Mon, Wed, Fri	7:15 PM	Medicaid Fee Sliding Fee No Charge X
Overeaters Anonymous						
Information	6075 Zenith Court Rio Rancho NM 87174	891-2664	12-Step Program	Mon - Fri	8:00 - 4:30	Medicaid Fee Sliding Fee No Charge X
Weight Watchers						
Bethel United Methodist Church	Rte 66 1-1/2 m. W of Moriarty Moriarty NM 87035	1-800-651-6000	Weight loss and prevention support	Tues Check-in	6:00 PM 5:40 PM	Medicaid Fee Sliding Fee No Charge X
Emanuel Baptist Church	19 Salt Mission Trail, Hwy 41 Estancia NM 87016	1-800-651-6000	Weight loss and prevention support	Mon	6:00 PM	Medicaid Fee Sliding Fee No Charge X
Support Programs						
Partnership for a Healthy Torrance County						
	809 S 1st St., Suite A Moriarty NM 87035	832-0332	Community Health Improvement Council: Community Assessment & Planning; Resource Development. Meets 1st Wed; call for info.	Mon - Thur Call for meeting information	7:30 - 5:30	Medicaid Fee Sliding Fee No Charge X
Torrance County Project Office						
	809 S 1st St., Suite A Moriarty NM 87035	832-0332	Information & Referral; Car Seats; Medicaid & State Coverage Insurance; Youth Development; Child Abuse; Domestic Violence; Transportation	Mon - Thurs Call for extended hours	7:30 - 5:30	Medicaid Fee Sliding Fee No Charge X
Vital Records & Health Statistics						
	1105 St. Francis Santa Fe NM 87502	505-827-0121	State of NM Birth and Death Certificates	Mon - Fri	8:30 - 4:00	Medicaid Fee Sliding Fee No Charge X
Teens & Youth						
Drug Free TRES Program						
Moriarty-Edgewood School District	200 Center St. Moriarty NM 87035	832-4471	Education and Prevention Programs, Special Education Children, Grades 4-12	Mon - Fri Call for info	8:00-4:00	Medicaid Fee Sliding Fee No Charge X

Provider	Physical Address	Phone	Services	Days	Hours	Fee/Billing
Eagles Wings Youth Ranch						
	514 North Manzano Ave. Mountainair NM 87036	847-0062	Free, spiritually-based camp, follow-up and mentoring program for at-risk youth	Mon - Fri	9:00 - 5:00	Medicaid Fee Sliding Fee No Charge X
Estancia Teens Need Teens (TNT)						
Estancia Municipal Schools	709 Hopewell Estancia NM 87016	384-2003 384-2351	Meet at Estancia Middle School once a month plus one activity per month. Meet weekly in summer for 5 weeks. Call for dates and times.	Mon - Fri	9:00 - 2:00	Medicaid Fee Sliding Fee No Charge X
Santa Fe County 4-H Clubs						
Santa Fe County Extension Office	3229 Rodeo Rd. Santa Fe NM 87507	1-505-471-4711	Life skills development projects, ages 5-19. Los Amigos (Edgewood) 286-3802, Edgewood Chaparrals 286-0519, Stanley Wrestlers 470-3819	Mon - Fri Closed for Lunch Call for info & locations	8:00 - 5:00 12:00 - 1:00	Medicaid Fee Sliding Fee No Charge X
Schools to Career / Work Program						
Estancia High School	602 Hopewell Estancia NM 87016	384-2002 Alan Carson	Work Experience Program	Mon - Fri Call for info	8:00 - 4:00	Medicaid Fee Sliding Fee No Charge X
Talking Talons Youth Leadership Program						
	754 Hwy 333 Tijeras NM 87059	604-0098	Environmental education; tobacco prevention; summer camp; WildFest event; Coalitions: East Mountain Health & Prevention, Environmental Educators	Mon - Fri Call for info	By appointment	Medicaid Fee Sliding Fee No Charge X
Teen Outreach Program (TOP)						
Torrance County Project Office	513 Williams Estancia NM 87016	384-1092 832-0332	Teen Outreach Program - youth development and adolescent pregnancy prevention; community service learning; 1/2 high school credit available.	Mon - Fri TOP Sessions	1:00 - 5:00 3:30 - 5:00	Medicaid Fee Sliding Fee No Charge X
The Loft Teen Ministry						
1st Baptist Church of Moriarty	413 W. Irene St Moriarty NM 87035	832-6385	Free Food, Video Games, Fun and Friendship Grades 7 thru 12.	Friday Nights	6:00 - 10:00	Medicaid Fee Sliding Fee No Charge X
Torrance County 4-H Clubs						
Cooperative Extension Services	205 9th and Allen Estancia NM 87016	246-4745	Youth Groups in Mountainair, Torreon, Estancia, McIntosh & Moriarty. All of Torrance County.	Mon - Thurs Call for info	7:30 - 5:30	Medicaid Fee Sliding Fee No Charge X

Provider	Physical Address			Phone	Services	Days	Hours	Fee/Billing	
Torrance County Teen Court									
Moriarty Magistrate Court	Moriarty	NM	87035	832-4424 Lori LeMoine	Teen Court		By Appointment	Medicaid Fee Sliding Fee No Charge	X
Youth Health Advisory									
Estancia Municipal School District	602 Hopewell Estancia	NM	87016	384-2002	Youth Leadership Program, Violence Prevention and Alcohol Awareness Program	Mon - Fri Call for info	8:00 - 4:00	Medicaid Fee Sliding Fee No Charge	X
Transportation - Medical									
Access2Care									
				1-866-410-0002	Medicaid Transportation for Amerigroup.	24 / 7		Medicaid Fee Sliding Fee No Charge	X
Integrated Transportation Management (ITM)									
Molina Healthcare	1345 E Main St., Ste 200 Mesa	AZ	85203	1-888-593-2052	Transportation for Molina Salud only	Mon - Fri	7:00 - 5:00	Medicaid Fee Sliding Fee No Charge	X
Logisticare									
	Phoenix	Az		1-866-418-9812	Medicaid Transportation for Evercare.			Medicaid Fee Sliding Fee No Charge	X
Safe Ride									
	1903 B Edith Blvd. NE Albuquerque	NM	87102	1-800-797-7433 255-4238	Presbyterian Salud, NM Medicaid, Private Pay	7 days/week	24 Hrs.	Medicaid Fee Sliding Fee No Charge	X X X
Superior Medical Transportation									
	Albuquerque	NM		1-877-735-0111 341-0042 (Alb Area)	Lovelace Salud--Call 48 hrs in advance.	Mon - Fri Call for info	24 Hrs.	Medicaid Fee Sliding Fee No Charge	X
TCPO TO GO Transportation									
Torrance County Project Office	809 S 1st St., Suite A Moriarty	NM	87035	832-0332	Transportation to Medical Appointments -- Call to Schedule	Mon - Fri	7:00 - 5:30	Medicaid Fee Sliding Fee No Charge	X X

Provider	Physical Address	Phone	Services	Days	Hours	Fee/Billing
Transportation - Public						
Smart Choice Ride						
Torrance Co. DWI Program & TCPO TO GO		505-705-0332 505-832-0332	Designated Driving Service for Moriarty & Estancia area	Fri & Sat	6PM - 2AM	Medicaid Fee Sliding Fee No Charge X
TCPO TO GO Transportation						
Torrance County Project Office	809 S 1st St., Suite A Moriarty NM 87035	832-0332	TANF, Public Fixed-Route, Seniors, Personal Business, Shopping, Work, School, Prescription Pick-Up	Mon - Fri Call for info	7:30 - 5:30	Medicaid Fee Sliding Fee No Charge X
Vision						
Cedar Crest Vision						
	12220 Hwy N 14 Suite 3 Cedar Crest NM 87008	286-0300	Complete Vision; accept most insurance plans.	Closed Mon Tues - Fri Sat	8:30-12; 1-5 8:30-12; 1-3:00	Medicaid Fee Sliding Fee No Charge X
East Mountain Eye Clinic						
P. Dulce Walker, O.D.	1917 Old Route 66 Edgewood NM 87015	286-2020	Complete Eye Care	Mon - Thur Lunch	8:00 - 5:00 12:30 - 2:00	Medicaid Fee Sliding Fee No Charge X
Wal-Mart Eye Center						
	66 State Rd. Hwy 344 Edgewood NM 87015	286-3043 286-3119	Eye exams/ Contacts/ Glasses	Mon - Sat Sun	9:00- 6:00 12:00 - 5:00	Medicaid Fee Sliding Fee No Charge X
Work Programs						
Forest Guild YCC Summer Youth Employment						
Mountainair High School	903 W 3rd street Mountainair NM 87036	847-2211	Summer employment for area youth in conservation	Mon- Fri	8:00- 5:00	Medicaid Fee Sliding Fee No Charge X
Mountainair Ranger District	#40 Ranger Station Rd. Mountainair NM 87036	847-2990	Land management company offering summer employment for area youth in range and wildlife conservation	Mon - Fri Lunch	8:00 - 4:30 12 - 12:30	Medicaid Fee Sliding Fee No Charge X

Provider	Physical Address			Phone	Services	Days	Hours	Fee/Billing
Torrance Works Career Center								
	109 Tulane Moriarty	NM	87035	832-5640	Job Skills Training, Job Resource Room, TANF and Food Stamps, CYFD Child Care, HSD application forms, GED	Mon - Fri	8:00 - 5:00	Medicaid Fee Sliding Fee No Charge X
Workforce Connection of Central New Mexico								
State of NM Department of Labor	777 Old US Route 66 Moriarty	NM	87035	832-6774	Adult & Youth Programs: Job Search, Job Skills Training, G.E.D.	Mon - Fri	8:00 - 5:00	Medicaid Fee Sliding Fee No Charge X
YCC Summer Youth Employment								
Wildlife West	87 N. Frontage Rd Edgewood	NM	87015	281-7655 1-877-981-9453	Summer employment for area youth in conservation and/or community improvement projects. Ages 16 - 25; need resume and 2 references.	Mon - Sun	10:00 - 6:00	Medicaid Fee Sliding Fee No Charge X



**To update your contact information:
Phone the Torrance County Project Office at 832-0332.**

**For additional copies of the directory please visit
our website to download the document for printing.**

www.tcpnm.com

**Go to the Information and Referral page and click on the link
for the Provider Directory.**