

UNIQUE ASSISTIVE TECHNOLOGY SOLUTIONS

Unique AT Solutions Submission Form

NAME OF THE AT SOLUTION YOU DEVELOPED:

Examples: Adapted Device for Tagging Clothing

Rubatex Switch Mount

CATEGORY:

You may choose more than one category if applicable

<input type="checkbox"/>	SEATING AND POSITIONING	<input type="checkbox"/>	COMMUNICATION	<input checked="" type="checkbox"/>	MOUNTING DEVICES
<input type="checkbox"/>	AIDS TO DAILY LIVING	<input type="checkbox"/>	MOBILITY	<input type="checkbox"/>	LEISURE
<input type="checkbox"/>	ELECTRONIC AIDS TO DAILY LIVING	<input type="checkbox"/>	EMPLOYMENT		
<input type="checkbox"/>	ENVIRONMENTAL MODIFICATION	<input type="checkbox"/>	SENSORY (HEARING, VISION, TACTILE, ETC.)		
<input type="checkbox"/>	OTHER				

BRIEF DESCRIPTION OF AT CHALLENGE:

What does the individual want to do that they can't do?

The individual uses a head switch for access to his voice output device and leisure activities like music. Initially his "Jelly Bean" switch was attached to his headrest with Velcro. The Velcro would eventually come off and did not allow flexible placement of his switch.

DESCRIBE AT SOLUTION(S):

What does it do? How was it made? How well did it work?

Cut an approx. 4" x 16" strip of Rubatex. (Could be any size needed). Sewed Velcro strips to the ends of the strip to allow closure. Wider Velcro strips allow more flexibility in the size of the band. Sewed the "Jelly Bean" switch to the Band.

The Rubatex material has some stretch and can be wiped off with a damp cloth. This material can be cut without hemming and no fraying occurs. The strip allowed the switch to be placed on the headrest easily and to allow adjustable but functional placement.

Worked well for this individual. Have also used for placement around other body parts, IE: thigh, knee, arm. Easy for caregivers as well.

LIST MATERIALS NEEDED, APPROX. COST, SOURCES IF KNOWN:

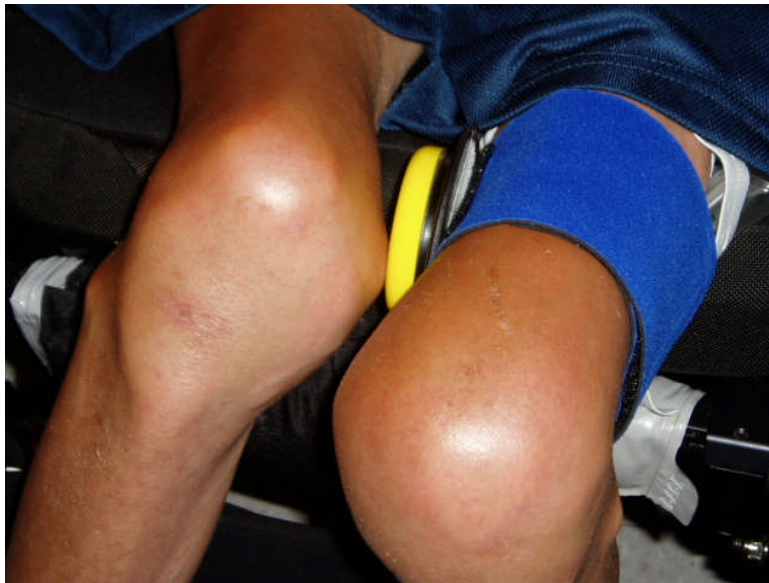
QNTY	ITEM	SOURCE	COST
	Rubatex Material	Rubber Lite 304-525-3116 or might be found at local fabric stores	
	Velcro		
	Switch		

E-mail this submission to Julie Mehrl, MOTR/L at Julie.Mehrl@state.nm.us
For further information call Julie at (505) 841-5341

"Unique Assistive Technology Solutions" Web Resources is a project of the New Mexico Developmental Disabilities Supports Division, Clinical Services Bureau. The purpose is to encourage individuals, teams and professionals to share AT Solutions used by individuals with Developmental Disabilities in order to provide ideas and resources for others. Do not publish or disseminate in public forum without permission. By submitting this form you give DDS permission to publish this information on the internet or to use portions of "Unique AT Solutions" submissions for training purposes.

PHOTO OR DIAGRAM:

We would really like a photo of your solution, please attach photo or drawing if available to the e-mail when submitting this form using JPEG, GIF or BMP formats. Respect the rights of individuals; do not submit recognizable faces in pictures, names, or specific personal information in descriptions.



DATE:

OPTIONAL INFORMATION:

SUBMITTED BY: Anonymous

CONTACT INFO:

E-mail this submission to Julie Mehrl, MOTR/L at Julie.Mehrl@state.nm.us
For further information call Julie at (505) 841-5341

"Unique Assistive Technology Solutions" Web Resources is a project of the New Mexico Developmental Disabilities Supports Division, Clinical Services Bureau. The purpose is to encourage individuals, teams and professionals to share AT Solutions used by individuals with Developmental Disabilities in order to provide ideas and resources for others. Do not publish or disseminate in public forum without permission. By submitting this form you give DDS Division permission to publish this information on the internet or to use portions of "Unique AT Solutions" submissions for training purposes.