

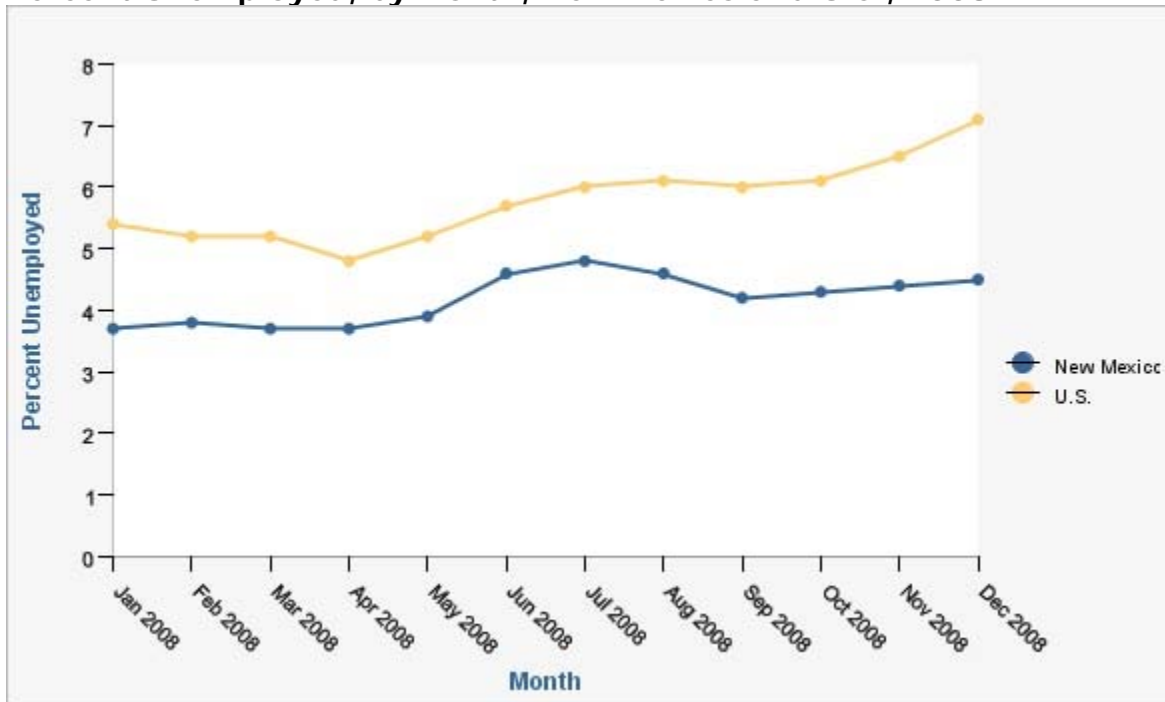
## Indicator Report for Unemployment in New Mexico

You are Here: NM-IBIS > Indicator Reports > current page

### Why Is This Important?

Household income is strongly related to health status for all persons in the household. Those living at or near the poverty level tend to have poorer health status, in part because they cannot always afford health care. Health status also depends on meeting a family's needs for adequate housing and nutrition. Lack of income may also keep children from having access to quality education, safe areas to play, and expose them to other risk factors. In addition, common reasons for unemployment include chronic mental or physical illness that limits a person's ability to work outside the home.

### Percent Unemployed, by Month, New Mexico and U.S., 2008



### Data Notes

Data are not seasonally adjusted.

### Data Sources

New Mexico Department of Workforce Solutions, 401 Broadway NE, Albuquerque NM 87102. Phone: (505) 841-8645. Website: [www.dws.state.nm.us](http://www.dws.state.nm.us);

### Other Views

- New Mexico and U.S., 2000 - 2008
- by County, 2008

### Definition

The percentage of the civilian labor force that was not employed and seeking employment. See Data Interpretation Issues for more information about the definition of employed versus unemployed persons.

### How We Calculated the Rates

Numerator: The number of unemployed persons in the civilian labor force.

Denominator: The total of persons in the civilian labor force, the sum of employed and unemployed persons.

***Page Content Updated On 05/20/09, Published on 05/20/09***

---

**Epidemiology and Response Division, New Mexico Department of Health, 1190 St. Francis Dr.,  
P.O. Box 26110, Santa Fe, NM, 87502. Telephone: (505) 476-3566**

---

The information provided above is from the New Mexico Department of Health's Center for Health Data NM-IBIS web site (<http://ibis.health.nm.state.us>). The information published on this website may be reproduced without permission. Please use the following citation: "Retrieved Fri, 29 May 2009 10:11:37 from New Mexico Department of Health, Center for Health Data, Indicator-Based Information System for Public Health Web site: <http://ibis.health.nm.state.us>".

Content updated: Wed, 20 May 2009 11:36:40 MDT