

**New Mexico Department of Health  
2009 Weekly Infectious Disease Report  
Week 25  
June 21, 2009 - June 27, 2009**

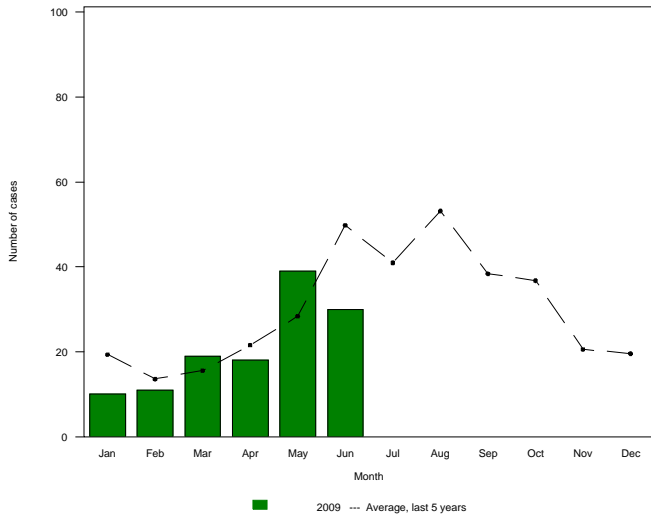


This report is prepared by the Infectious Disease Epidemiology Bureau (IDEB) for notifiable infectious diseases reported through the New Mexico Electronic Disease Surveillance Systems (NM-EDSS). NM-EDSS is a web-based system used by public health staff throughout the state to track investigations of suspected, probable and confirmed cases of notifiable infectious diseases. Data for the current year are provisional and subject to change upon the completion of ongoing disease investigations. Sexually Transmitted Diseases, Tuberculosis and HIV/AIDS data are currently reported through other systems. For information on these diseases, contact the responsible programs directly: Sexually Transmitted Diseases, 505-476-3611; Tuberculosis, 505-827-2500, HIV/AIDS, 505-476-3515. Questions regarding the content of this report should be referred to the IDEB Surveillance Team at 505-827-0006.

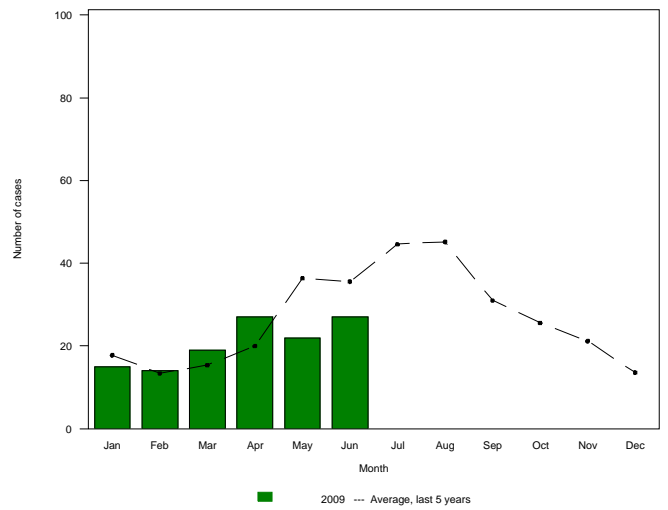
# Monthly Trends for Selected Notifiable Infectious Diseases As of June 27, 2009

*Includes probable and confirmed cases only.  
Data for the current year are provisional and subject to change upon the completion of ongoing disease investigations.*

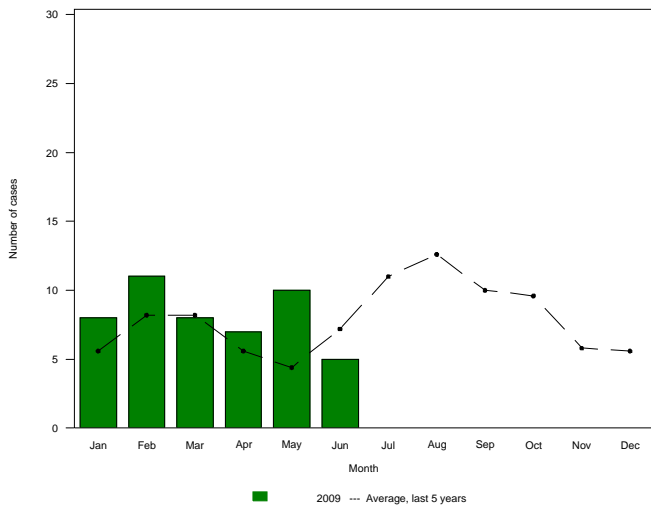
**Incidence of Campylobacteriosis by Month**



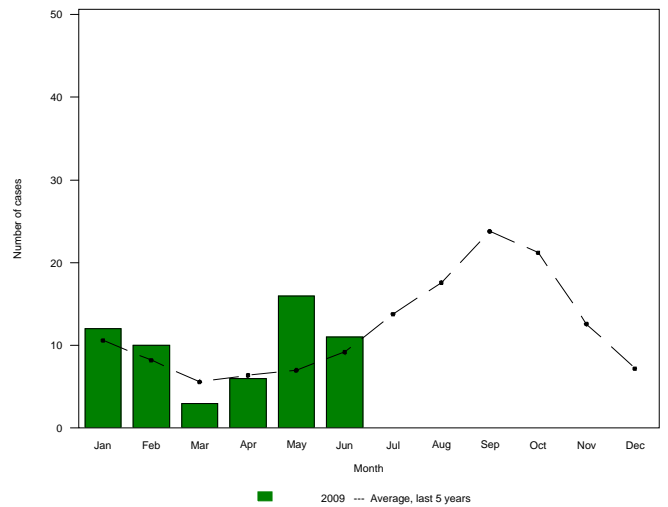
**Incidence of Salmonellosis by Month**



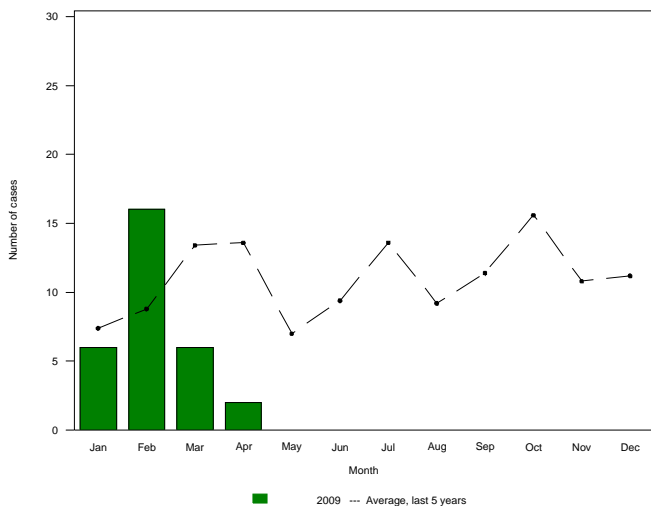
**Incidence of Giardiasis by Month**



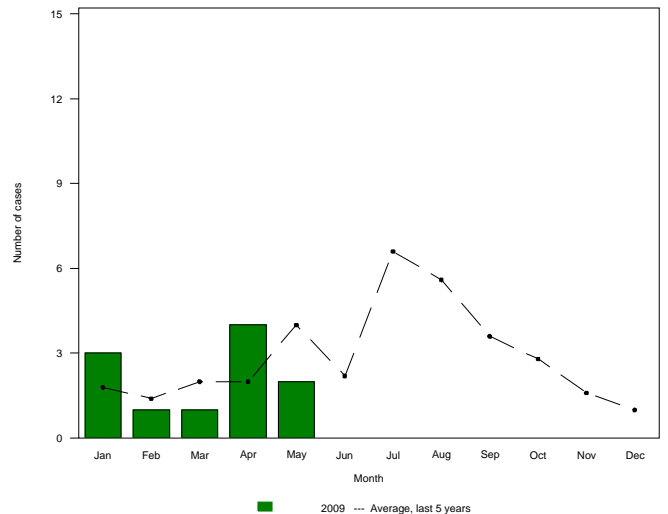
**Incidence of Shigellosis by Month**



**Incidence of Pertussis by Month**



**Incidence of Shiga toxin-producing E. coli by Month**



# Summary of Notifiable Infectious Diseases Reported to the New Mexico Electronic Disease Surveillance System (NM-EDSS) As of June 27, 2009

Includes probable and confirmed cases only.

Data for the current year are provisional and subject to change upon the completion of ongoing disease investigations.

Condition	This Week 2009	This Week 2008	Week Diff	Last 4 Weeks 2009	Last 4 Weeks 2008	Last 4 Weeks Diff	YTD 2009	YTD 2008	YTD Diff	Total 2008	Total 2007
Botulism, foodborne	0	0	0	0	0	0	1	0	1	0	1
Botulism, infant	0	0	0	0	0	0	0	1	-1	2	2
Botulism, wound	0	0	0	0	0	0	0	0	0	0	1
Brucellosis	0	0	0	0	0	0	0	0	0	1	1
Campylobacteriosis	7	20	-13	32	57	-25	127	130	-3	368	372
Coccidioidomycosis	0	1	-1	0	3	-3	3	19	-16	35	23
Colorado tick fever	0	0	0	0	1	-1	0	1	-1	1	0
Cryptosporidiosis	1	0	1	8	6	2	51	31	20	244	127
Cyclosporiasis	0	0	0	0	0	0	1	1	0	2	2
Giardiasis	0	0	0	6	6	0	49	41	8	108	119
Group A Streptococcus, invasive	0	2	-2	6	14	-8	51	93	-42	149	107
Group B Streptococcus, invasive	1	4	-3	6	11	-5	46	52	-6	134	123
Haemophilus influenzae, invasive	0	1	-1	1	4	-3	15	28	-13	51	43
Hansen disease (Leprosy)	0	0	0	0	0	0	0	1	-1	1	1
Hantavirus infection	0	0	0	0	0	0	0	0	0	0	1
Hantavirus pulmonary syndrome	0	0	0	1	0	1	2	1	1	2	3
Hemolytic uremic synd,postdiarrheal	0	0	0	0	0	0	1	2	-1	6	0
Hepatitis A, acute	0	0	0	1	0	1	6	14	-8	18	12
Hepatitis B Viral Infection, Perinatal	0	0	0	0	0	0	1	0	1	1	0
Hepatitis B virus infection, Chronic	0	2	-2	4	7	-3	59	65	-6	123	136
Hepatitis B, acute	0	0	0	1	0	1	5	7	-2	12	13
Hepatitis C Virus Infection, chronic or resolved*	1	55	-54	25	211	-186	492	1153	-661	2585	1577
Hepatitis C, acute	0	0	0	0	0	0	5	4	1	5	5
Hepatitis E, acute	0	0	0	0	0	0	0	0	0	1	0
Legionellosis	0	0	0	0	0	0	1	3	-2	11	10
Listeriosis	0	0	0	0	1	-1	1	1	0	5	4
Lyme disease	0	0	0	0	2	-2	0	3	-3	8	5
Malaria	0	0	0	0	1	-1	0	1	-1	3	5
Measles (Rubeola)	0	0	0	0	0	0	0	1	-1	1	1
Mumps	0	0	0	1	0	1	1	0	1	0	0
Neisseria meningitidis, invasive (Mening. disease)	0	0	0	0	0	0	3	4	-1	8	3
Novel Influenza A Virus Infections	2	0	2	6	0	6	161	0	161	0	0
Pertussis	0	1	-1	0	2	-2	30	25	5	94	74
Plague	0	0	0	2	0	2	4	1	3	1	5
Q fever	0	0	0	0	0	0	0	0	0	0	12
Q fever, Acute	0	0	0	0	2	-2	1	3	-2	3	0
Rabies, animal	0	0	0	0	3	-3	15	17	-2	30	15
Rocky Mountain spotted fever	0	0	0	0	0	0	1	1	0	4	6
Salmonellosis	8	18	-10	29	93	-64	124	243	-119	524	290
Shiga toxin-producing Escherichia coli (STEC)	0	0	0	0	1	-1	12	18	-6	49	39
Shigellosis	2	3	-1	12	7	5	58	24	34	162	108
Strep pneumoniae, invasive	0	3	-3	13	23	-10	159	240	-81	383	363

\*Data are affected by significant reporting delays

## Summary of Notifiable Infectious Diseases Reported to the New Mexico Electronic Disease Surveillance System (NM-EDSS) As of June 27, 2009

Includes probable and confirmed cases only.

Data for the current year are provisional and subject to change upon the completion of ongoing disease investigations.

Condition	This Week 2009	This Week 2008	Week Diff	Last 4 Weeks 2009	Last 4 Weeks 2008	Last 4 Weeks Diff	YTD 2009	YTD 2008	YTD Diff	Total 2008	Total 2007
Streptococcal toxic-shock syndrome	0	0	0	0	0	0	0	0	0	0	1
Tetanus	0	0	0	0	0	0	0	0	0	0	1
Toxic Shock Syndrome, GP A strep	0	0	0	0	0	0	1	0	1	0	0
Tularemia, Human	0	0	0	0	0	0	0	0	0	1	1
Typhoid fever (Salmonella typhi)	0	0	0	0	0	0	0	1	-1	1	1
Varicella (Chickenpox)	2	2	0	4	11	-7	75	137	-62	219	422
Vibrio parahaemolyticus	0	0	0	0	0	0	0	0	0	1	0
Vibrio spp., non-toxigenic, other or unspecified	0	0	0	0	1	-1	0	1	-1	1	0
West Nile virus neuroinvasive disease	0	0	0	0	0	0	0	0	0	5	39
West Nile virus non-neuroinvasive disease	0	0	0	0	0	0	0	0	0	3	21
Yersiniosis	0	1	-1	0	1	-1	0	1	-1	2	3

\*Data are affected by significant reporting delays