



Influenza Surveillance Report

October 7, 2009

Outpatient Influenza-Like Illness (ILI) Surveillance

- For the week ending 10/3/09, visits to doctors for influenza-like illness (ILI) in New Mexico rose from 5.1% to 10.5% (Figure 1). The ILI visit percentage is significantly higher than what is expected during this time of year for both New Mexico and the United States.
- For the week ending 10/3/09, the percentage of outpatient visits for ILI in New Mexico regions ranged from 4.6% to 24.0% {Region 1 (Northwest NM)=7.8% for 10/3/09 compared to 6.5% for 9/26/09; Region 2 (Northeast NM)=4.6% for 10/3/09 compared to 2.4 % for 9/26/09; Region 3 (Bernalillo County)=14.3% for 10/3/09 compared to 5.0% for 9/26/09; Region 4 (Southeast NM)=24.0% for 10/3/09 compared to 10.6%; Region 5 (Southwest NM)=4.9% for 10/3/09 compared to 2.3% for 9/26/09.} ILI visits have increased in all regions over the past several weeks.

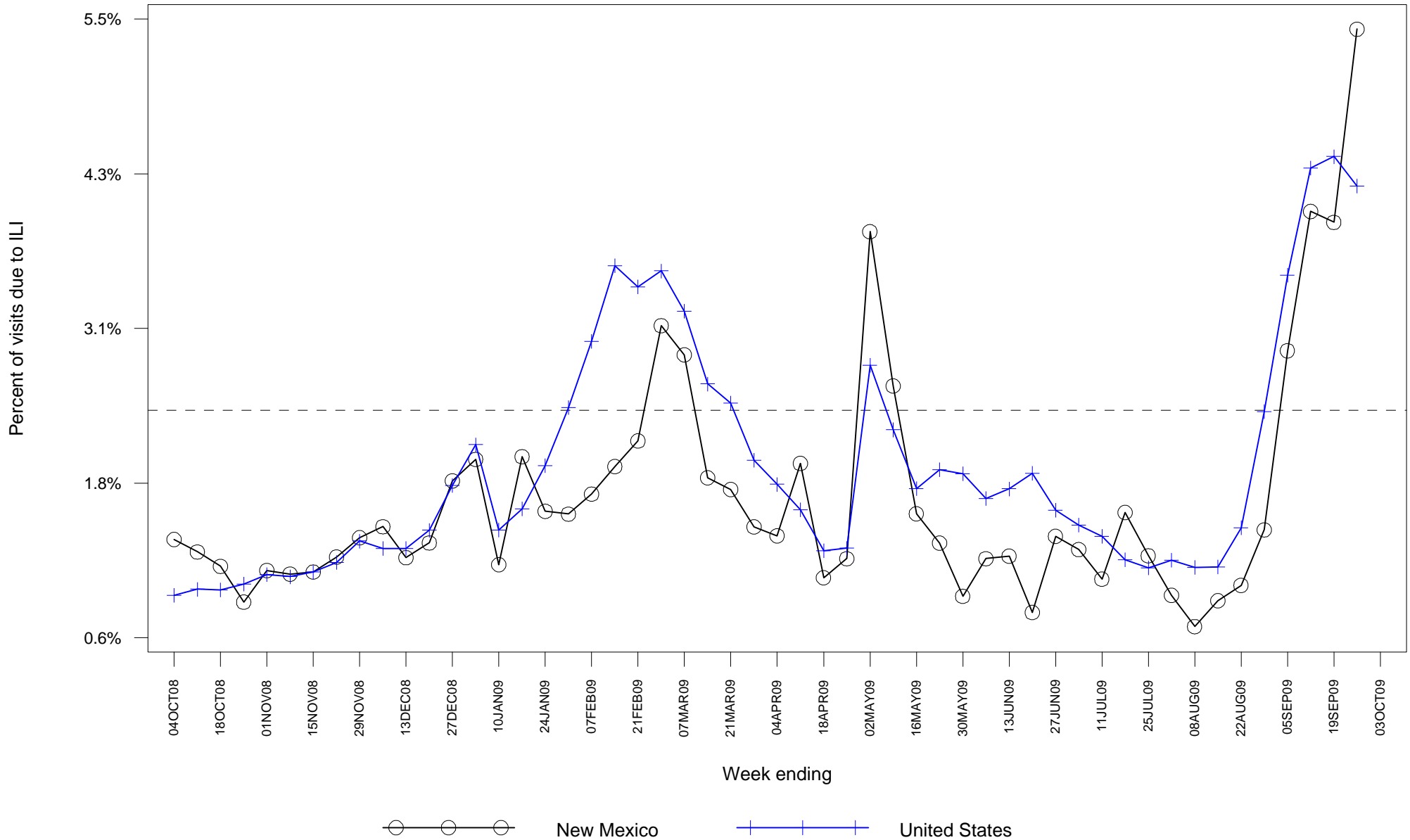
Laboratory-confirmed Influenza Hospitalization Surveillance

- As of 10/7/09, there have been 140 hospitalizations related to lab-confirmed H1N1 influenza infection in New Mexico. Table 1 summarizes hospitalizations by county of residence.

Laboratory-confirmed Influenza Death Surveillance

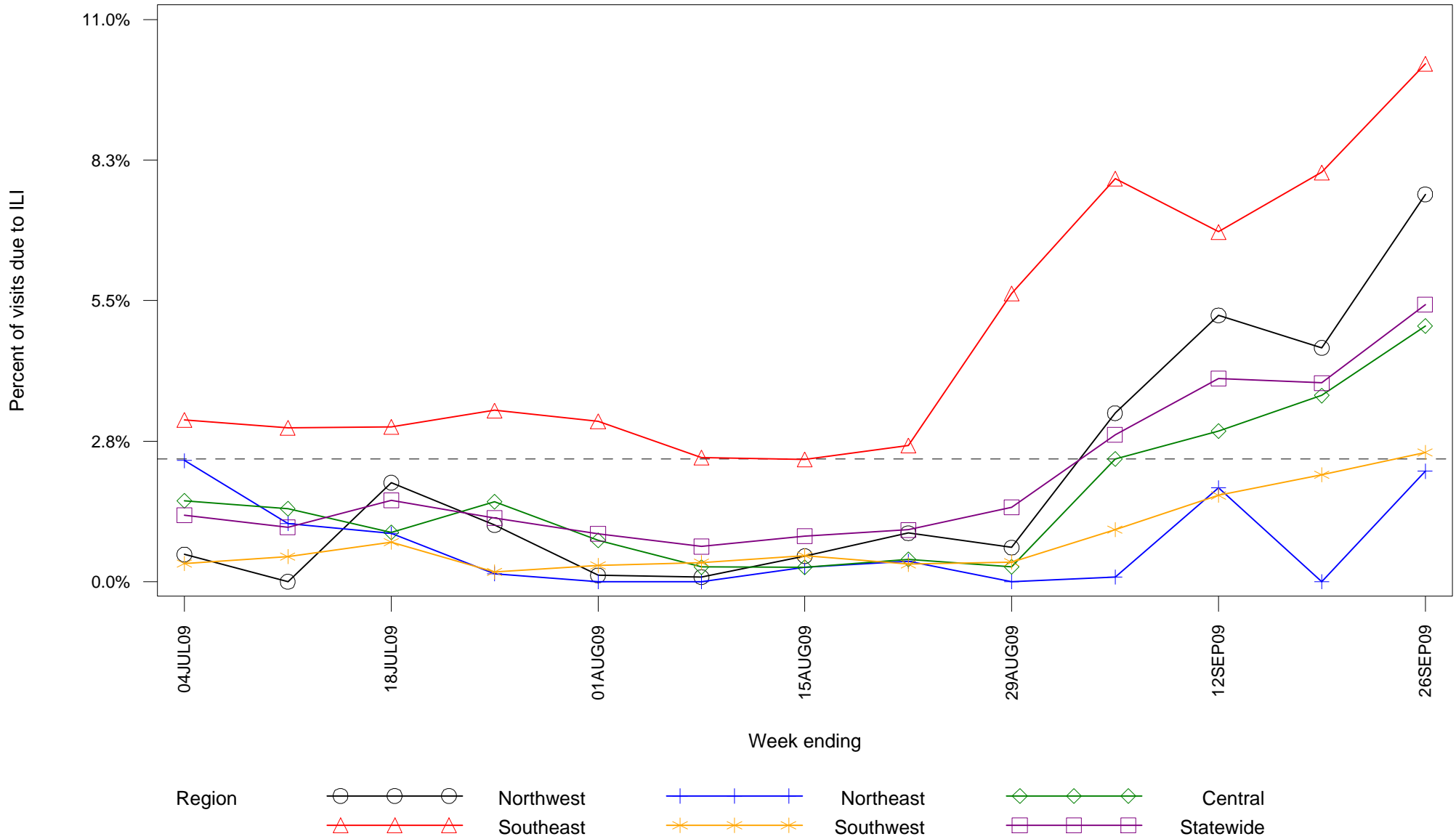
- As of 10/7/09, there have been 9 deaths related to lab-confirmed H1N1 influenza infection in New Mexico. The deaths are as follows: a 45-year-old female from Sierra County with end stage liver disease, a 52-year-old female from Bernalillo County with chronic pulmonary disease, a 48-year-old female from McKinley County with asthma and diabetes, a 57-year-old male from Bernalillo County with chronic pulmonary disease and a 21-year-old female from Los Alamos County without chronic medical conditions, a 5-year-old female from Sandoval County without chronic medical conditions, a 17-year-old female from Chaves County without chronic medical conditions, a 6-month-old female from Roosevelt County without chronic medical conditions and a 28-year-old male from Lea County without chronic medical conditions. Table 2 summarizes deaths by county of residence (the "County, Unknown" death listed in Table 2 was from Lea County. The late addition of county of residence information into the tracking database for this death prevented it from appearing in Table 2).

**Figure 1: Percent of sentinel provider outpatient visits due to influenza-like illness (ILI)
New Mexico and United States**



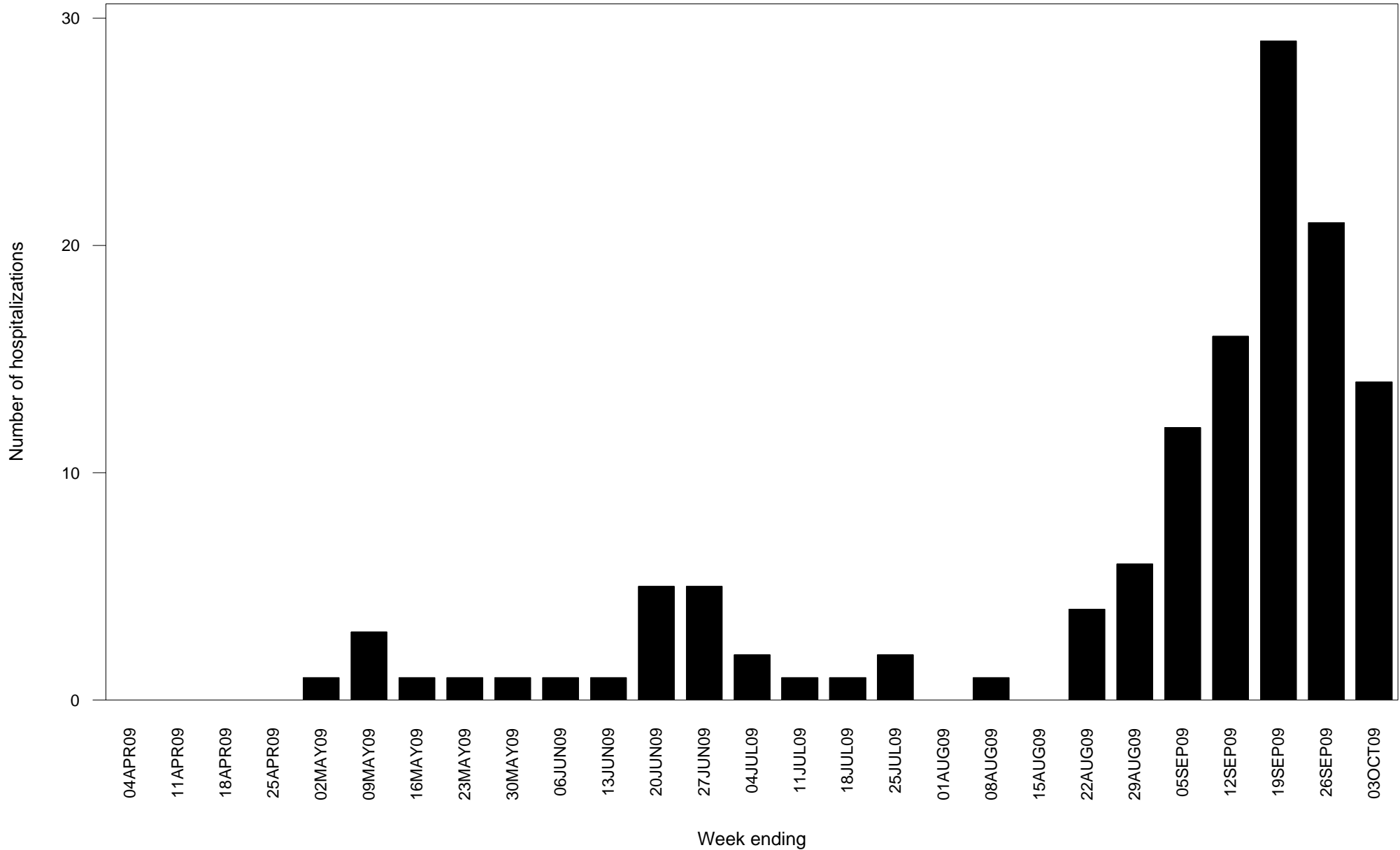
Dashed line indicates national baseline value of 2.4%. Reporting of US data is delayed a week.

Figure 2: Percent of sentinel provider outpatient visits due to influenza-like illness (ILI) New Mexico



Dashed line indicates national baseline value of 2.4%. The Southeast region consistently reports ILI visit percentages that are higher than other regions so differences between regions should be interpreted with caution.

**Figure 3: Laboratory-confirmed influenza hospitalizations by admission date
New Mexico**



Report date substituted for admission date for 15 hospitalizations for which admission date has not yet been determined.

**Table 1: Cumulative laboratory-confirmed influenza hospitalizations by county of residence
New Mexico**

County	Number
Bernalillo County	14
Chaves County	4
Cibola County	4
Dona Ana County	12
Eddy County	5
Lea County	2
Lincoln County	2
Los Alamos County	1
McKinley County	20
Otero County	6
Rio Arriba County	3
Roosevelt County	2
San Juan County	12
Sandoval County	3
Santa Fe County	6
Sierra County	4
Socorro County	4
Taos County	7
Unknown	15
Valencia County	2
Total	128

**Table 2: Cumulative lab-confirmed influenza deaths by county of residence
New Mexico**

County	Number
Bernalillo County	2
Chaves County	1
Los Alamos County	1
McKinley County	1
Roosevelt County	1
Sandoval County	1
Sierra County	1
Unknown	1
Total	9