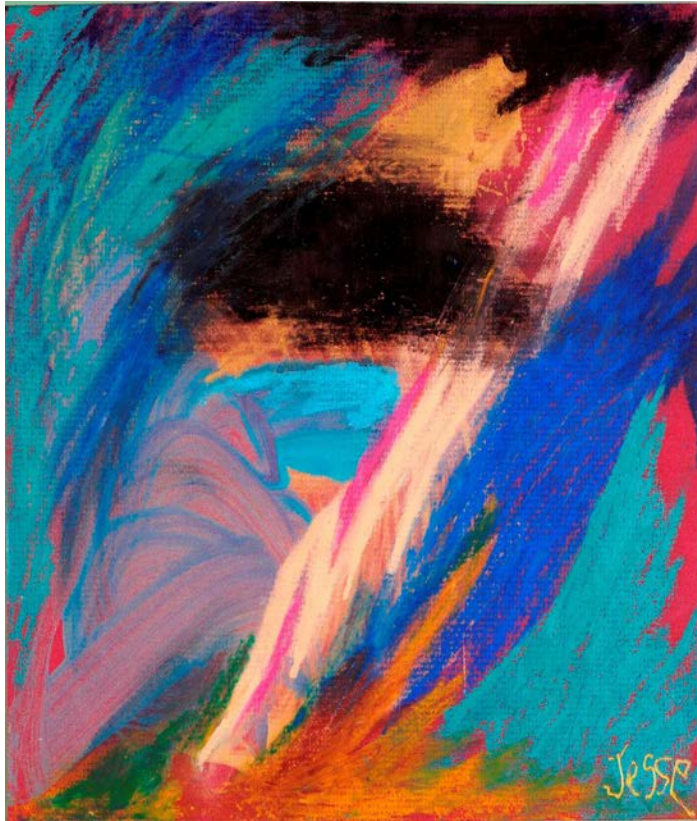


PARTICIPANT CORNER

A beautiful painting by talented participant Jesse.



PLEASE SHARE YOUR TALENT:

Are you a poet, storyteller, artist or just want to a picture of yourself doing a favorite activity or some great news? Please submit pictures of your original artwork, short stories, or poems. Articles to be featured in an upcoming Mi Via Newsletter.

Submissions can be sent to:

Rachel.gonzales@state.nm.us

IN THIS ISSUE

- **Participant Corner**
- **Email Updates Needed**
- **Face to Face Visits**
- **New Training Opportunities**
- **Come Be a Part of the Mi Via Advisory Committee**
- **Rate Study**
- **Just for Laughs**
- **Service Highlights**
- **Circle of Support**
- **Community Events**
- **Community Resources**

FMA-Conduent Contact Information:

Phone: 1-800-283-4465

Toll-free Fax: 1-866-302-6787

E-mail for Form Submission:

docprocessing@conduent.com

Physical Address:

1720-A Randolph Rd SE

Albuquerque, NM 87106



AUGUST 2022

Face-to-Face Visits

Revised Mi Via Service Standards went into effect July 1, 2022. One of the new requirements in the Mi Via service standards is for consultants to conduct monthly face-to-face visits with participants. Monthly face-to-face visits allows:

- an opportunity for stronger relationship-building
- more frequent advocacy and support for Mi Via participants and their families, and
- the ability to closely monitor participants' health and safety.

Also, staff from the Developmental Disabilities Supports Division (DDSD) have also been doing home visits with Mi Via participants and their families. DDSD is excited to meet more of our participants!

The July 2022 Mi Via Service Standards can be found at the link:

<https://nmhealth.org/about/ddsd/>

New Training Opportunities!!

New in the Mi Via Service Standards is required trainings for Consultants, Mi Via workers and Employer of Records (EORs). You can find the required trainings at:

<https://www.cdd.unm.edu/other-disability-programs/>

[disability-health-policy/ddsd-courses/mi-via-consultant.html](https://www.cdd.unm.edu/other-disability-programs/disability-health-policy/ddsd-courses/mi-via-consultant.html).

If you have questions or need assistance accessing the trainings, please contact your consultant.

Come Be a Part of the Mi Via Advisory Committee

The Mi Via Advisory Committee (MVAC) is accepting nominations for membership. The MVAC works with the State to on waiver improvements. If you are interested, please send an email and ask for a nomination form to: Elaine.Hill@state.nm.us This is a great opportunity to have your voice heard, advocate for change and improvements to the Mi Via Waiver, and to work together with many different people in making important decisions that can impact your services and supports.

ACTIVITIES IN YOUR COMMUNITY

- Special Olympics 4 Corners Invitational 8/19-8/20 - Farmington
- 2022 Los Alamos Fair & Rodeo Parade 8/13- Los Alamos
- Mountainair Sunflower Festival Monte Alto Plaza 8/27- Mountainair
- Inaugural Forest Fiesta Mujeres Campground 8/13- Fence Lake
- Chama Days 8/11- Chama
- NM Comic Expo, 8/12-8/14-Alb Convention Ctr-Albuquerque



AUGUST 2022

SERVICE HIGHLIGHT – EMPLOYMENT SUPPORTS

Department of Health (DOH) Rate Study

The DOH Developmental Disabilities and Supports Division (DDSD) will be looking at provider rates and to see if New Mexico has enough providers in our communities to provide services. The rate study will look at rates paid to the following services: In Home Living Support, Physical Therapy, Occupational Therapy, Speech and Language Pathology and Behavior Support Consultation. Please participate in the rate study. Stay tuned for more information on how to be a part of the upcoming rate study.

- Employment Support services provide support to participants who want to find and maintain jobs of their choice in their community.
- Employment services are made to meet the individual needs of the participant.
- Participants get help from employment support professionals with job development and job coaching.
- Coaching services will include training on specific work task on the job, vocational skills, co-worker training, and job site study to name a few

JUST FOR LAUGHS

What kind of shorts do clouds wear?

Thunder pants

Do you want to hear a construction joke?

Sorry, I'm still working on it

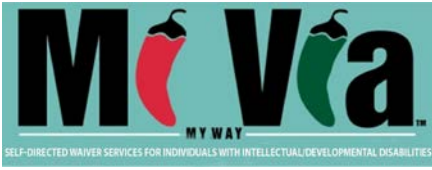
What do dentists call their x-rays?

Tooth pics!

COMMUNITY RESOURCES

Below are different resources available all over New Mexico that may be able to assist with home repairs for low-income New Mexico residents

- Supportive Housing Coalition of NM (SHCNM)-<https://shcnm.org/>
- Bernalillo County Housing Department – BCHD 505-314-0226
- Ohkay Owingeh Housing Authority – OOHA 505-852-0189
- San Felipe Pueblo – SFHA-505-771-9291
- Southwestern Regional Housing & CDC – SRHCD-575-546-4181
- El Camino Housing Authority – ECHA-575-835-0196



AUGUST 2022

Mi Via Circle of Support

MI VIA DOH Website: <https://nmhealth.org/about/ddsd/pgsv/sdw>

Consultant Agency Name	Contact Name	Phone	E-mail	Region(s)
A New Vision	Andrea Gonzales	505-553-3322	bluebirdcm@outlook.com	Metro and NE Regions
Consumer Direct Personal Care (CDPC)	Jacqueline Mares	505-344-8182 ext. 3536	jacquelinem@consumerdirectcare.com	All of New Mexico
CNRAG, Inc. (Care Network Resource Assistance Group)	Shaleen Diaz	575-621-3461	sdiaz@cnragusa.com	Metro, SE, and SW
Excel Case Management, Inc.	Jennifer Pennington	505-324-8660 ext. 102	jPennington@excelcasemanagement.com	NW and SE Regions
Innovative Self Direction	Frank Aquila	505-850-7662	faquila@innovativeselfdirection.com	All of New Mexico
Los Amigos, LLC	Michelle Rutt	505-920-4511	Michelle@losamigosnm.com	All of New Mexico
Me Town Enterprises, LLC	Kimberly Riebsomer	505-310-9069	riebsomer@gmail.com	Metro and NE
Merit Consulting, LLC	Melinda Broussard	505-288-2889	mbroussard.merit@gmail.com	Metro
Peak Developmental Services	Sarah Martinez	505-281-9962	smartinez@nmddwcm.com	All of New Mexico
Self-Directed Choices	Sandy Skaar Jacob Patterson	505-508-1663 505-331-3167	Sandy@sdchoices.com Jacob@SDChoices.com	All of New Mexico
UNM Center for Development and Disability (CDD)	Carrie Roberts Janelle Groover	505-280-6442 505-401-9328	CnRoberts@salud.unm.edu jtorresgroover@salud.unm.edu	All of New Mexico
Visions Case Management	Charles Clayton	575-779-7419 888-588-9152	Charles@visionsnm.com	All of New Mexico



AUGUST 2022

Human Services Department / Medical Assistance Division – Exempt Services and Program Bureau
 PO Box 2348, Santa Fe, NM 87504-2348
 Toll-free Phone: 1-888-997-2583, Fax: 505-827-7277

HSD manages the FMA/Conduent contract and the TPA/Comagine contract

Deanna DeHerrera	Mi Via & Medically Fragile Waivers Staff Manager Functions: Mi via & Medically Fragile Waiver Oversight	505-629-7260	Deanna.DeHerrera@state.nm.us
Rachel Gonzales	Mi Via Social & Community Coordinator Functions: Conduent, Billing, Payment issues	505-490-3721	Rachel.gonzales@state.nm.us
Jennifer Romero	Mi Via Social & Community Coordinator Functions: Participant Eligibility Issues and Technical Assistance	505-469-8522	Jennifer.Romero3@state.nm.us

Comagine Health
 PO Box 20910, Albuquerque, NM 87154-0190
 Phone: 1-866-962-2180

Comagine Health is the Third-Party Assessor (TPA) for Mi Via. They are responsible for reviewing and approving the Service and Support Plans (SSP).

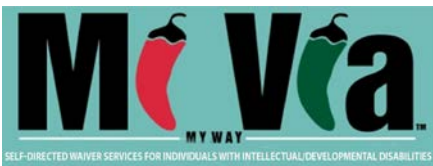
Department of Health / Developmental Disabilities Supports Division
 5301 Central NE, Suite 203, Albuquerque, NM 87108
 Phone: 1-800-283-5548

DOH operates the Mi Via Program for Developmental Disability (DD) and Medically Fragile (MF) Populations Oversees consultant agency contracts

Elaine Hill	Mi Via Waiver Program Manager Functions: Participant/Consultant Issues and Technical Assistance, and statewide MF WCF & MF CACF	505-506-6103	elaine.hill@state.nm.us Fax: 505-841-6523
Rudy Aguilera	Mi Via Waiver Project Coordination Functions: Participant/Consultant Issues and Technical Assistance	505-239-7826	rudy.aguilera@state.nm.us Fax: 505-841-6523

Care Coordination

Blue Cross Blue Shield	877-232-5518 Option 3	www.bcbsnm.com/community-centennial
Presbyterian	505-923-5200	http://www.phs.org/centennialcare
Western Sky	844-543-8996	http://www.westernskycommunitycare.com/



AUGUST 2022

August 2022 Dates to Remember

Sun	Mon	Tue	Wed	Thu	Fri	Sat
	1	2	3	4	5 <i>Vendor Checks Received or Deposited</i>	6 <i>Deadline to submit PRFs for 8/12 payment</i>
7	8	9	10	11	12 <i>Paychecks and Vendor Checks Received or Deposited; end of the pay period.</i>	13 <i>Deadline to submit faxed timesheets, Mileage & PRFs for 8/19 payment</i>
14	15	16	17	18	19 <i>Vendor Checks Received or Deposited</i>	20 <i>Deadline to submit PRFs for 8/26 payment</i>
21	22	23	24	25	26 <i>Paychecks and Vendor Checks Received or Deposited; end of the pay period.</i>	27 <i>Deadline to submit faxed timesheets, Mileage & PRFs for 9/2 payment</i>
28	29	30	31	September 1	September 2 <i>Vendor Checks Received or Deposited</i>	September 3 <i>Deadline to submit PRFs for 9/9 payment</i>